
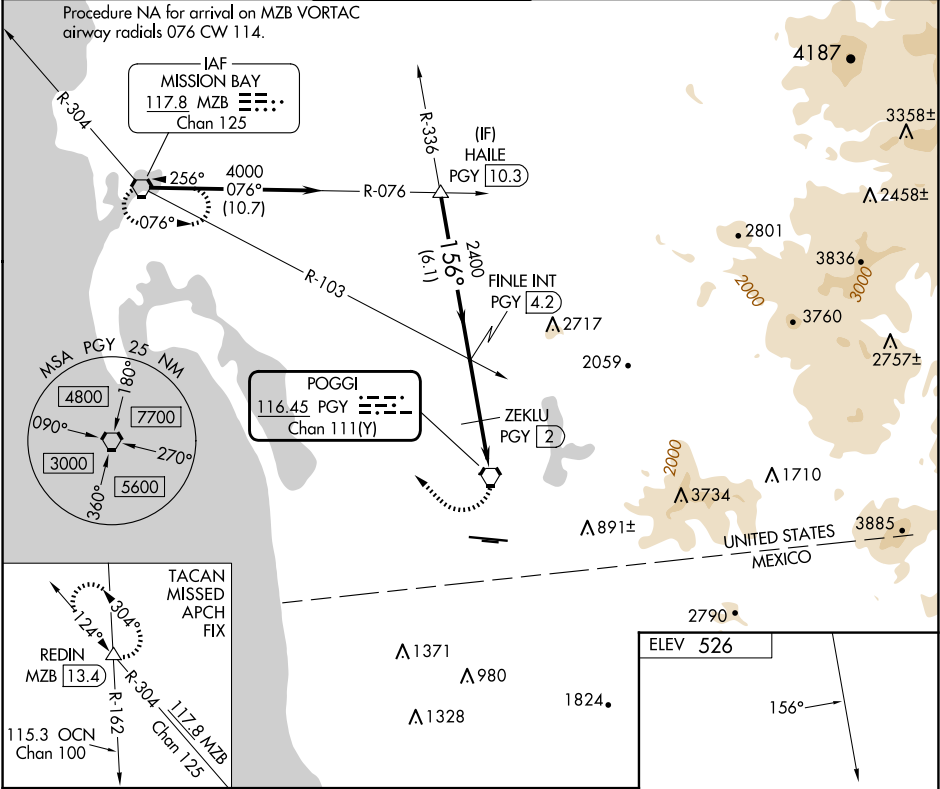







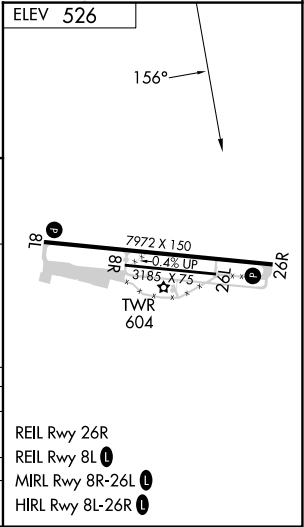
VORTAC PGY <b>116.45</b> Chan <b>111</b> (Y)	APP CRS <b>156°</b>	Rwy Ldg TDZE Apt Elev <b>N/A</b> <b>526</b>
--	------------------------	---

VOR or TACAN-A  
BROWN FLD MUNI (SDM)

 Circling NA south of Rwy 8R-26L.		MISSED APPROACH: Climbing right turn 4000 to MZB VORTAC and hold. (TACAN aircraft continue on MZB VORTAC R-304 to REDIN INT/MZB VORTAC 13.4 DME and hold NW, LT, 124° inbound)			
ATIS <b>132.35</b>	SOCAL APP CON <b>124.35 279.625</b>	BROWN TOWER ★ <b>128.25</b> (CTAF) <b>0 225.4</b>	GND CON <b>124.4</b>	CLNC DEL <b>124.4</b>	UNICOM <b>122.95</b>



<div>HAILE PGY <span>10.3</span></div> <div>FINLE INT PGY <span>4.2</span></div> <div>ZEKLU PGY <span>2</span></div> <div>PGY VORTAC</div>				<div>4000</div> <div></div> <div>MZB</div> <div></div>
<div>4000</div> <div>156°</div> <div>2400</div> <div>1380</div> <div>6.1 NM</div> <div>2.2 NM</div> <div>2 NM</div> <div></div>				
CATEGORY	A	B	C	D
 CIRCLING	1380-2¾ 854 (900-2¾)			2260-3 1734 (1800-3)
ZEKLU FIX MINIMUMS (DME REQUIRED)				
 CIRCLING	1140-2¾ 614 (700-2¾)	1340-2¾ 814 (900-2¾)	2260-3 1734 (1800-3)	



SW-3, 07 AUG 2025 to 04 SEP 2025

SW-3, 07 AUG 2025 to 04 SEP 2025