

WAAS
CH **72811**
W18A

APP CRS
180°

Rwy Idg **5005**
TDZE **338**
Apt Elev **363**

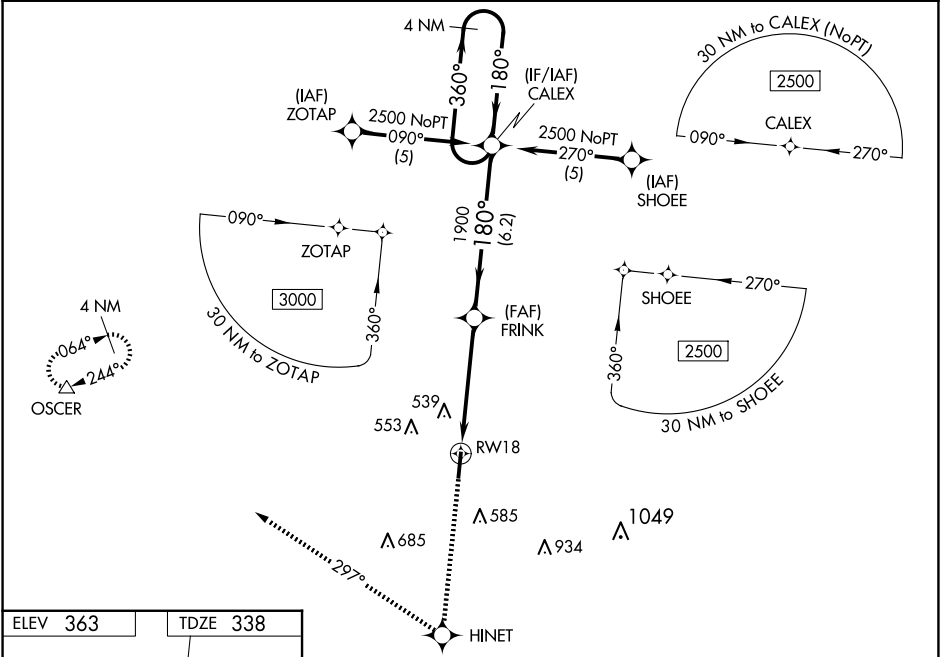
RNAV (GPS) RWY 18

HUNTSVILLE MUNI (UTS)

▼ Baro-VNAV NA when using Conroe/North Houston Rgnl altimeter setting. For uncompensated Baro-VNAV systems, LNAV/VNAV NA below -15°C (5°F) or above 54°C (130°F). DME/DME RNP-0.3 NA. Visibility reduction by helicopters NA. VDP NA when using Conroe/North Houston Rgnl altimeter setting. When local altimeter setting not received, use Conroe/North Houston Rgnl altimeter setting and increase all DA 75 feet and all MDA 80 feet; increase LPV and LNAV/VNAV all Cats and Circling Cat C visibility ¼ mile.

MISSED APPROACH: Climb to 4000 direct HINET and right turn via track 297° to OSCER and hold.

ASOS 119.425	HOUSTON CENTER 134.8 269.6	UNICOM 122.8 (CTAF) ①
------------------------	--------------------------------------	---------------------------------



ELEV 363

TDZE 338

180° to RWY 18

81

5005 X 100

1.3% UP

36

REIL Rwy 18 and 36 ①

MIRL Rwy 18-36 ①

4000 HINET

OSCER

VGSI and RNAV glidepath not coincident (VGSI Angle 3.00/TCH 26).

CALEX

4 NM Holding Pattern

360°

180°

2500

1900

1.4 NM

3.4 NM

6.2 NM

GP 3.00° TCH 40

CATEGORY	A	B	C	D
LPV DA	588-1	250 (300-1)		NA
LNAV/VNAV DA	886-2	548 (600-2)		NA
LNAV MDA	840-1	502 (500-1)	840-1½ 502 (500-1½)	NA
CIRCLING	920-1	557 (600-1)	1120-2¼ 757 (800-2¼)	NA