

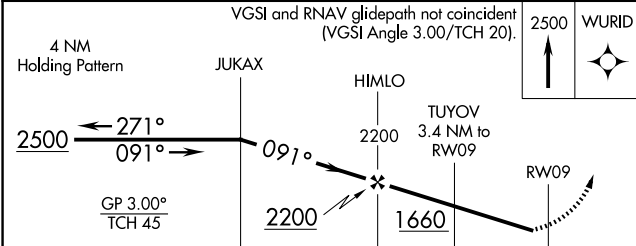
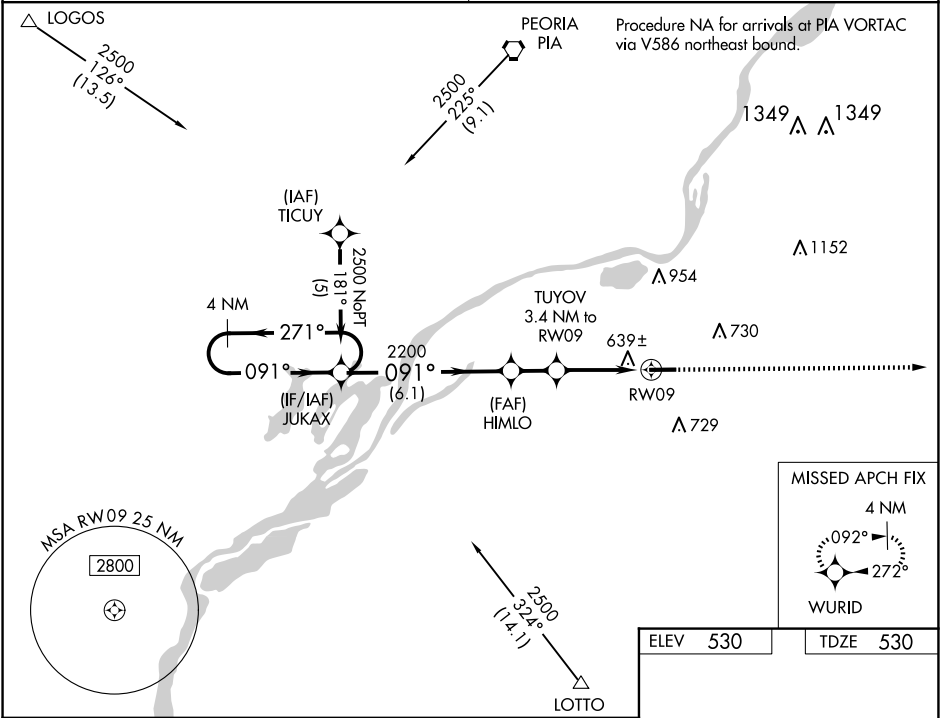
WAAS CH 53509 W09A	APP CRS 091°	Rwy Idg TDZE 530 Apt Elev 530
--	------------------------	---

RNAV (GPS) RWY 9

PEKIN MUNI (C15)

RNP APCH-GPS	Baro-VNAV NA. Rwy 9 helicopter visibility reduction below ¾ SM NA. Use General Downing - Peoria Intl altimeter setting; when not received, use Lincoln altimeter setting; increase LPV DA to 887 feet; increase LNAV/VNAV DA to 1007 feet; increase all MDAs 40 feet and visibility Cat C and D ¼ SM.	MISSED APPROACH: Climb to 2500 direct WURID and hold.
--------------	--	--

SAINT LOUIS APP CON 125.8 269.2	UNICOM 122.8 (CTAF)
---	-------------------------------



ELEV 530	TDZE 530
REIL Rwy 9 and 27	
MIRL Rwy 9-27	

CATEGORY	A	B	C	D
LPV DA	862-1 332 (400-1)			
LNAV/VNAV DA	982-1⅜ 452 (500-1⅜)			
LNAV MDA	940-1 410 (500-1)	940-1⅛ 410 (500-1⅛)		
CIRCLING	1060-1 530 (600-1)	1100-1½ 570 (600-1½)		1360-2¾ 830 (900-2¾)

EC-3, 07 AUG 2025 to 04 SEP 2025

EC-3, 07 AUG 2025 to 04 SEP 2025