

WAAS  
CH 40010  
W32A

APP CRS  
318°

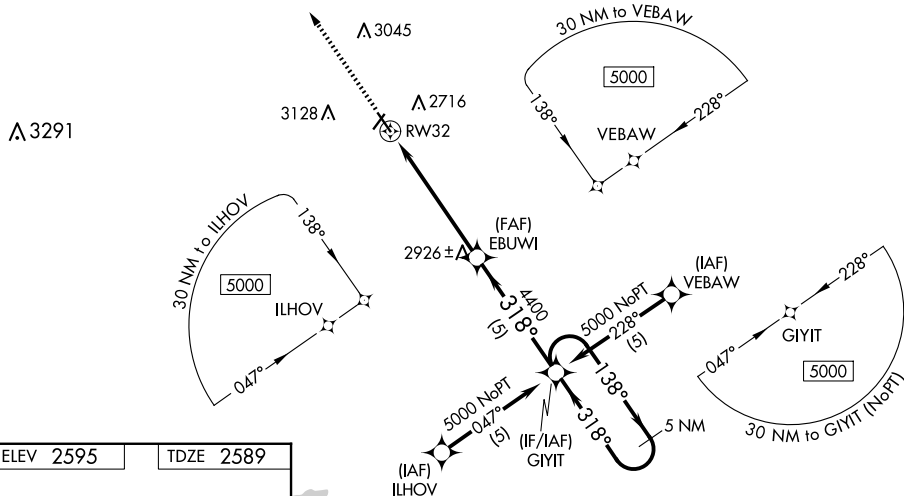
Rwy Idg	<b>4705</b>
TDZE	<b>2589</b>
Apt Elev	<b>2595</b>

RNAV (GPS) RWY 32  
MILLER FLD (VTN)

RNP APCH.

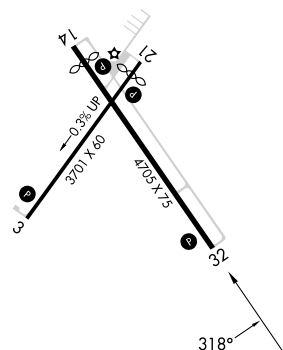
MISSED APPROACH: Climb to 5000 direct AHOFU and hold.

Baro-VNAV NA below -20°C (-4°F).

ASOS  
118.075DENVER CENTER  
127.95 338.2UNICOM  
122.8 (CTAF) **L**

ELEV 2595

TDZE 2589

REIL Rwy 32 **L**MIRL Rwy 3-21 and 14-32 **L**

Amdt 1A 28FEB19

42°51'N-100°33'W

MILLER FLD (VTN)

RNAV (GPS) RWY 32

NC-2, 07 AUG 2025 to 04 SEP 2025