

APP CRS
184°

Rwy Idg
TDZE
Apt Elev
N/A
N/A
29

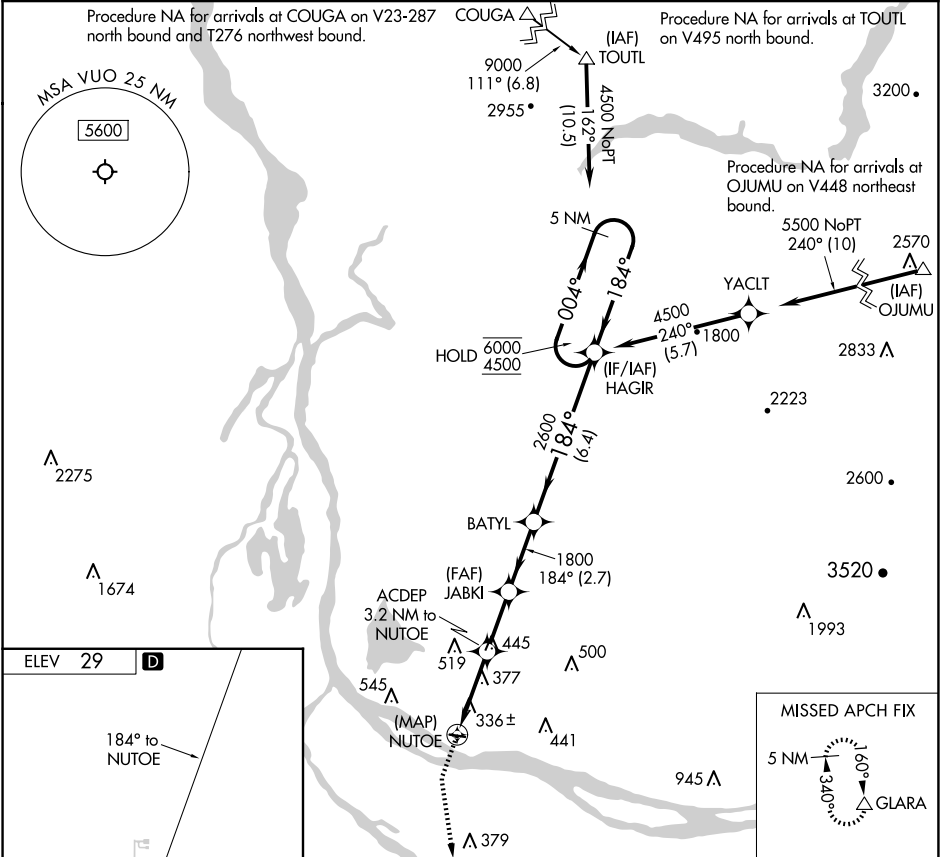
RNAV (GPS)-B
PEARSON FLD (VUO)

RNP APCH - GPS.

When local altimeter setting not received, use Portland Intl altimeter setting.

MISSED APPROACH: Climb to 900 then climbing left turn to 5000 direct GLARA and hold, continue climb-in-hold to 5000.

ASOS 135.125	PORTLAND APP CON 124.35 360.8	CLNC DEL 119.0 (CTAF) 0
------------------------	---	-----------------------------------



ELEV 29 **D**

184° to NUTOE

3275 X 60

20

900 5000 GLARA

ACDEP 3.2 NM to NUTOE

JABKI

BATYL

HAGIR

5 NM Holding Pattern

004° 184°

6000 4500

2600 1800 1200

3.2 NM 2.3 NM 2.7 NM 6.4 NM

REIL Rwy 26

MIRL Rwy 8-26 **0**

CATEGORY	A	B	C	D
C CIRCLING	720-1 691 (700-1)	740-1 711 (800-1)	NA	