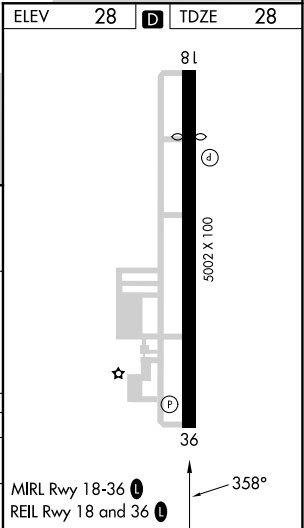
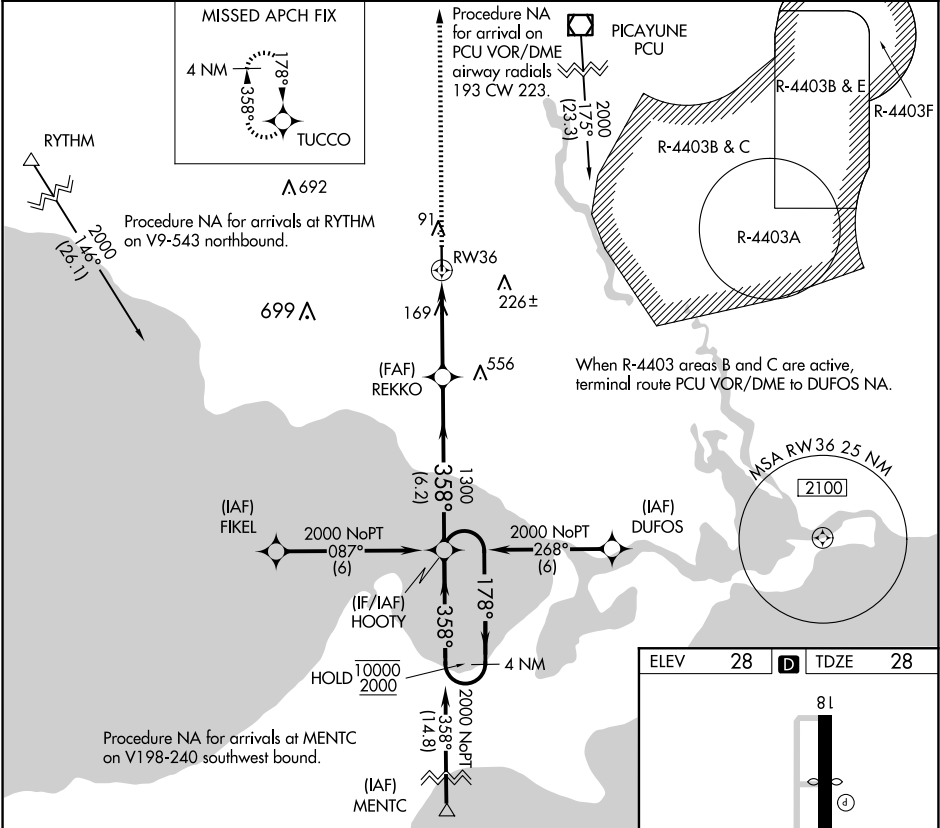


APP CRS	Rwy Ldg	5001
358°	TDZE	28
	Apt Elev	28

RNAV (GPS) RWY 36
SLIDELL (ASD)

RNP APCH.	MISSED APPROACH: Climb to 2000 direct TUCCO and hold.
Rwy 36 helicopter visibility reduction below 3/4 SM NA.	

ASOS 132.475	NEW ORLEANS APP CON 133.15 290.3	UNICOM 122.8 (CTAF)	GCO 135.075
-----------------	-------------------------------------	------------------------	----------------



4 NM Holding Pattern				
HOOTY				
VGSI and descent angles not coincident (VGSI Angle 3.00/TCH 50).				
REKKO				
1.2 NM to RW36				
RW36				
6.2 NM				
2.6 NM				
1.2				
CATEGORY	A	B	C	D
LNVA MDA	460-1	432 (500-1)	460-1¼ 432 (500-1¼)	NA
CIRCLING	480-1	452 (500-1)	520-1½ 492 (500-1½)	NA

SC-4, 07 AUG 2025 to 04 SEP 2025

SC-4, 07 AUG 2025 to 04 SEP 2025