

WAAS CH <b>49017</b> <b>W03A</b>	APP CRS <b>029°</b>	Rwy Idg <b>4400</b> TDZE <b>410</b> Apt Elev <b>416</b>
--	------------------------	---

RNAV (GPS) RWY 3

FARMVILLE RGNL (FVX)

RNP APCH-GPS.

▼

Baro-VNAV NA when using Lynchburg Rgnl/Preston Glenn Fld altimeter setting. For uncompensated Baro-VNAV systems, LNAV/VNAV NA below -15°C or above 54°C. Straight-in/Circling Rwy 3 procedure NA at night. When local altimeter setting not received, use Lynchburg Rgnl/Preston Glenn Fld altimeter setting and increase LPV DA to 878 feet and all visibilities  $\frac{3}{8}$  SM. Increase LNAV/VNAV DA to 970 feet and all visibilities  $\frac{1}{2}$  SM. Increase all MDAs 160 feet and LNAV visibility Cat C  $\frac{1}{4}$  SM, and Circling visibility Cat C  $\frac{1}{2}$  SM. Rwy 3 helicopter visibility reduction below 1 SM NA.

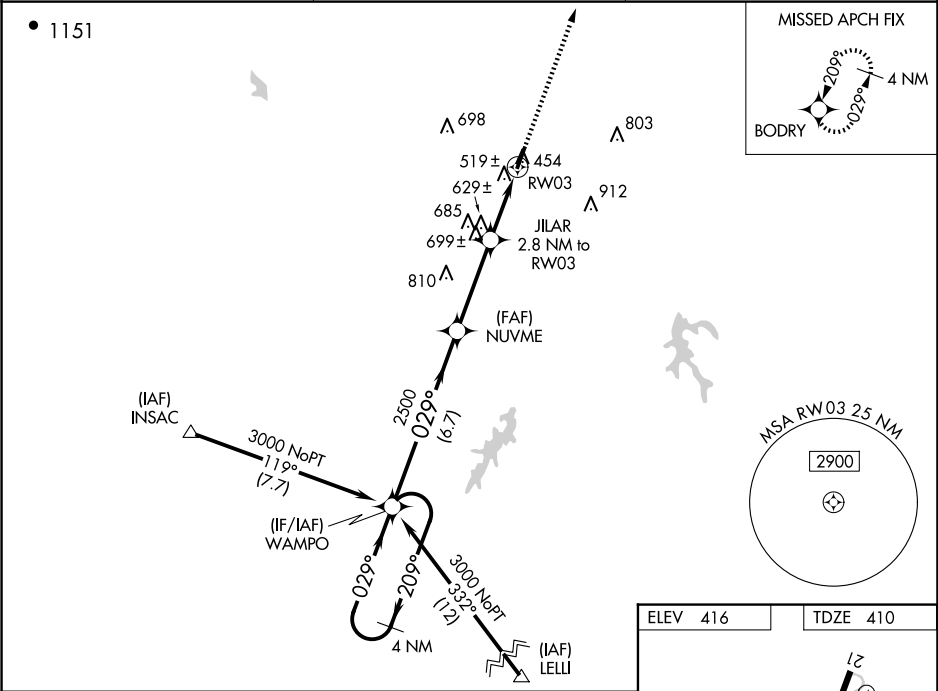
MISSED APPROACH:

Climb to 3000 direct BODRY and hold.

AWOS-3  
**132.725**

ROANOKE APP CON  
**135.0 254.325**

UNICOM  
**122.8 (CTAF)**



4 NM Holding Pattern		VGSI and RNAV glidepath not coincident (VGSI Angle 3.00/TCH 44).		3000	BODRY
WAMPO		NUVME		2500	JILAR 2.8 NM to RW03
3000 ← 209°		→ 029°		*LNAV only.	
GP 3.00° TCH 56		2500		RW03	
		*1360			
		6.7 NM		3.5 NM	
				2.8 NM	
CATEGORY		A	B	C	D
LPV DA		720-1 310 (400-1)			NA
LNAV/VNAV DA		812-1 $\frac{1}{8}$ 402 (400-1 $\frac{1}{8}$ )			NA
LNAV MDA		880-1	470 (500-1)	880-1 $\frac{3}{8}$ 470 (500-1 $\frac{3}{8}$ )	NA
CIRCLING		900-1	484 (500-1)	1000-1 $\frac{1}{2}$ 584 (600-1 $\frac{1}{2}$ )	NA

