

WAAS CH <b>86543</b> <b>W04A</b>	APP CRS <b>044°</b>	Rwy Idg <b>5001</b> TDZE <b>978</b> Apt Elev <b>979</b>
--	------------------------	---

## RNAV (GPS) RWY 4

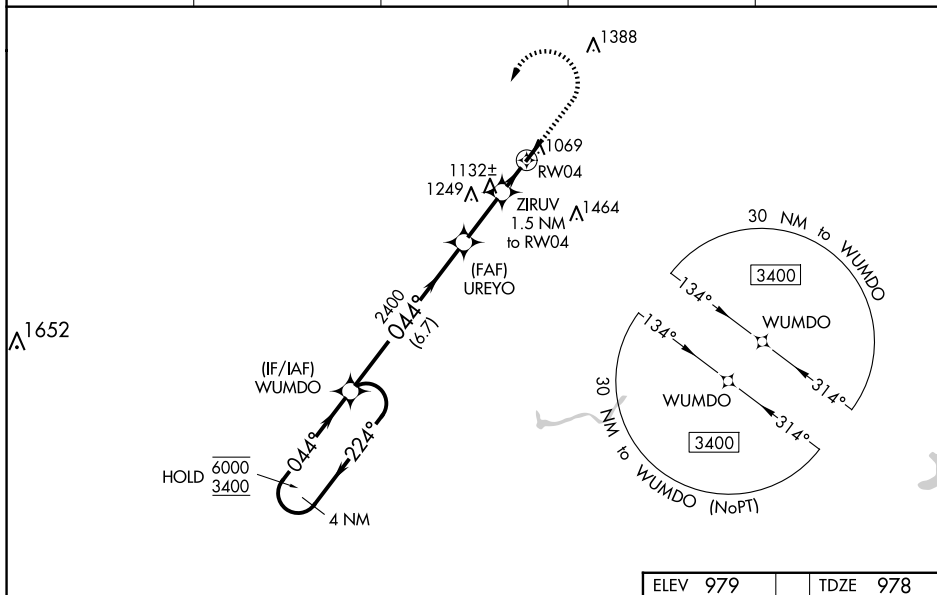
RICHARD DOWNING (T40)

RNP APCH.

**▼** Rwy 4 helicopter visibility reduction below  $\frac{3}{4}$  SM NA. Baro-VNAV NA when using Zanesville  
**▲** **NA** altimeter setting. For uncompensated Baro-VNAV systems, LNAV/VNAV NA below -16°C or  
 above 48°C. When local altimeter setting not received, use Zanesville altimeter setting and  
 increase LPV DA to 1344 feet, increase LNAV/VNAV DA to 1310 feet, increase all MDA 80 feet  
 and LPV and LNAV/VNAV visibility  $\frac{1}{8}$  SM, LNAV Cat C/D visibility  $\frac{1}{4}$  SM, and Circling Cat  
 C/D visibility  $\frac{1}{8}$  SM.

**MISSED APPROACH:**  
Climb to 1480 then  
climbing left turn to  
3400 direct WUMDO  
and hold.

AWOS-3 <b>118.875</b>	INDIANAPOLIS CENTER <b>124.45 323.275</b>	GCO <b>121.725</b>	UNICOM <b>123.0</b> (CTAF)	<b>122.9</b> 
--------------------------	--	-----------------------	-------------------------------	--



EC-2, 07 AUG 2025 to 04 SEP 2025

4 NM Holding Pattern

VGSJ and RNAV glidepath not coincident (VGSJ Angle 3.50/TCH 26).

WUMDO

UREYO

ZIRUV 1.5 NM to RW04

RW04

\*1560

GP 3.50° TCH 45°

224°

044°

044°

2400

2400

6.7 NM

2.3 NM

1.5 NM

1480

3400

WUMDO

\*LNAV only.

