

WAAS CH <b>42838</b> <b>W22A</b>	APP CRS <b>224°</b>	Rwy Idg <b>5001</b> TDZE <b>979</b> Apt Elev <b>979</b>
--	------------------------	---

RNAV (GPS) RWY 22

RICHARD DOWNING (I40)

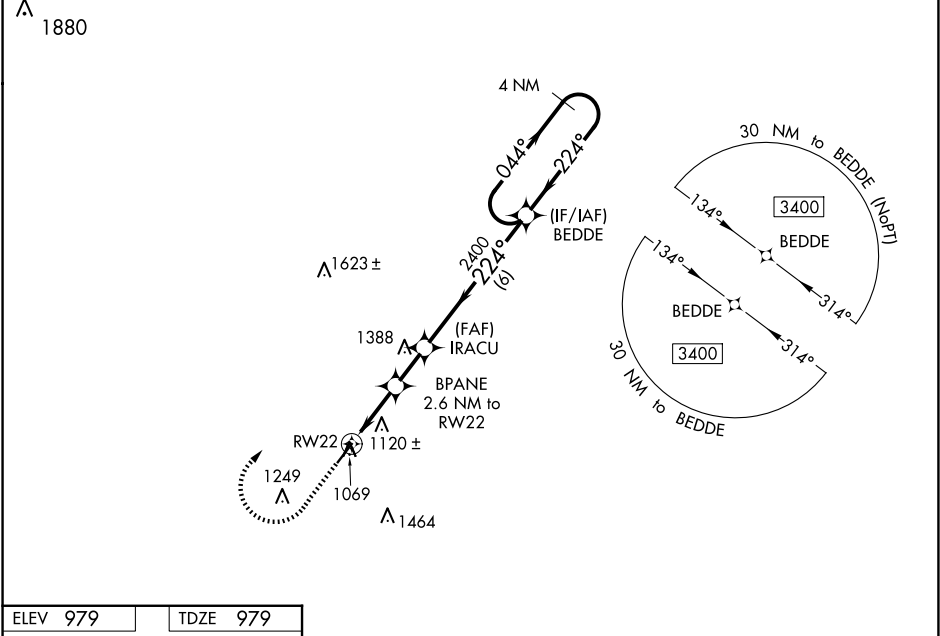
⚠

NA

For uncompensated Baro-VNAV systems, LNAV/VNAV NA below -16°C (4°F) or above 54°C (130°F). Baro-VNAV and VDP NA when using Zanesville altimeter setting. DME/DME RNP-0.3 NA. When local altimeter setting not received, use Zanesville altimeter setting and increase LPV DA to 1291 feet and all visibilities ¼ SM, increase LNAV/VNAV DA to 1501 feet and all visibilities ½ SM, increase all MDA 80 feet and LNAV Cat C/D visibility ¼ SM, Circling Cat C/D visibility ½ SM.

MISSED APPROACH:  
Climb to 1400 then climbing right turn to 3400 direct BEDDE and hold.

AWOS-3 <b>118.875</b>	INDIANAPOLIS CENTER <b>124.45 323.275</b>	GCO <b>121.725</b>	UNICOM <b>123.0</b> (CTAF)	<b>122.9</b>
--------------------------	--	-----------------------	-------------------------------	--------------



ELEV 979	TDZE 979
----------	----------

1400

3400

BEDDE

\*LNAV only.

BPANE  
2.6 NM to  
RWY 22

IRACU  
2400

BEDDE

224°

044°

224°

3400

4 NM  
Holding Pattern

GP 3.00°  
TCH 45

500' x 75'

REIL Rwy 22

MIRL Rwy 4-22

CATEGORY	A	B	C	D
LPV DA	1229-3⁄4		250 (300-3⁄4)	
LNAV/VNAV DA	1439-15⁄8		460 (500-15⁄8)	
LNAV MDA	1380-1	401 (500-1)	1380-11⁄8	401 (500-11⁄8)
CIRCLING	1440-1 461 (500-1)	1520-1 541 (600-1)	1780-21⁄4 801 (900-21⁄4)	1780-21⁄2 801 (900-21⁄2)