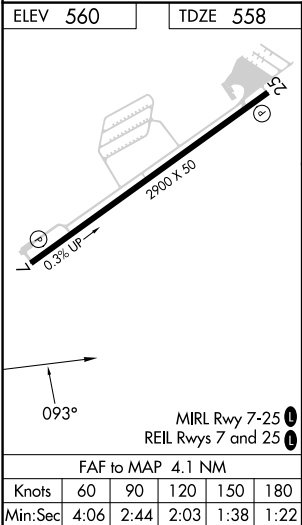
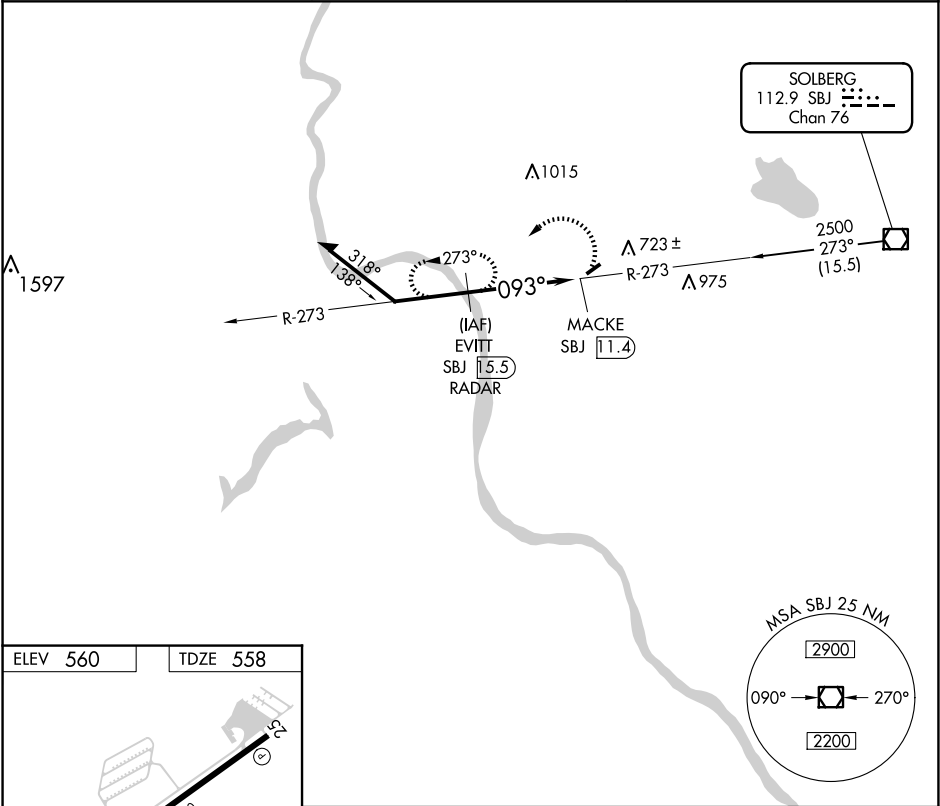


| | | | |
|-------------|---------|----------|------|
| VOR/DME SBJ | APP CRS | Rwy Idg | 2900 |
| 112.9 | 093° | TDZE | 558 |
| Chan 76 | | Apt Elev | 560 |

VOR RWY 7
SKY MANOR (N40)

| | |
|--|--|
| DME or RADAR required. | MISSED APPROACH: Climbing left turn to 2500 on SBJ VOR/DME R-273 to EVITT/SBJ 15.5 DME/RADAR and hold. |
| Procedure NA at night. When local altimeter setting not received, use Lehigh Valley Intl altimeter setting. Rwy 7 helicopter visibility reduction below 1 SM NA. | |

| | | |
|-------------------|--|----------------------------|
| AWOS-3 121.725 | ALLENTOWN APP CON 119.65 124.45 351.8 | UNICOM 122.975 (CTAF) 0 |
|-------------------|--|----------------------------|



| | | | | |
|--|-----------------------|----------------|-----------|----------------|
| Remain within 5 NM | EVITT SBJ 15.5 | | 2500 | EVITT SBJ 15.5 |
| | 273° | | SBJ R-273 | |
| 2500 | 093° | MACKE SBJ 11.4 | | |
| VGSI and descent angles not coincident (VGSI Angle 4.00/TCH 31). | 1800 | 4.1 NM | 0.4 | |
| CATEGORY | A | B | C | D |
| S-7 | 1220-1 662 (700-1) | NA | | |
| CIRCLING | 1220-1 660 (700-1) | NA | | |