

APP CRS  
**229°**

Rwy Idg  
TDZE  
**488**

Apt Elev  
**492**

**RNAV (GPS) RWY 23**

BROOKHAVEN-LINCOLN COUNTY (1R7)

RNP APCH - GPS.

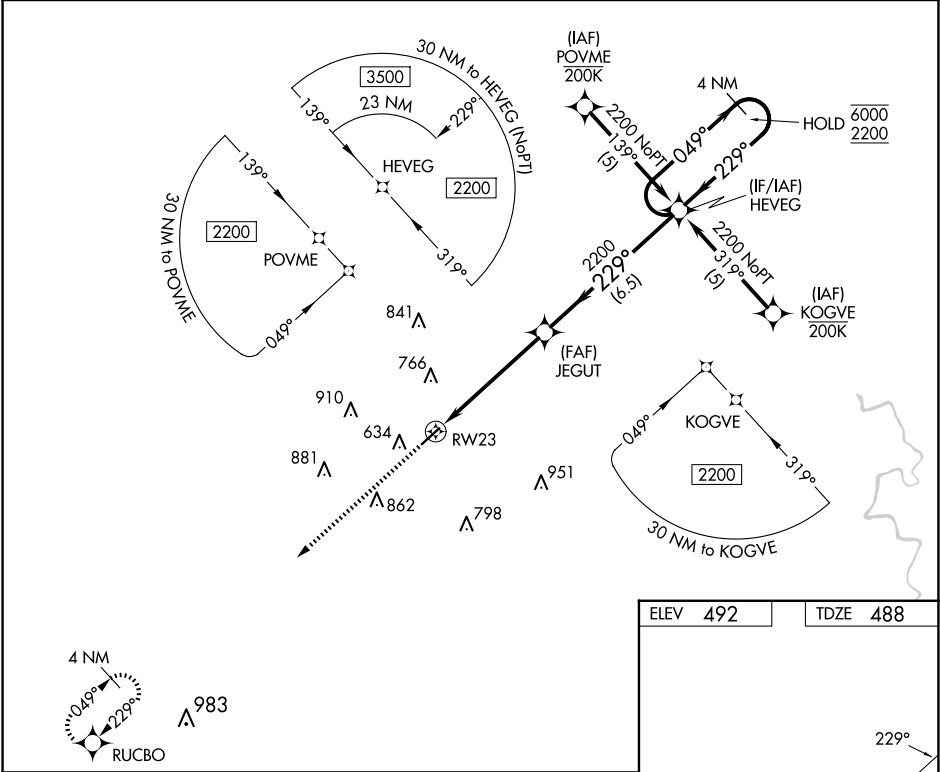
▼

▲

Procedure NA at night. Rwy 23 helicopter visibility reduction below 1 SM NA. When local altimeter setting not received, use McComb altimeter setting and increase all MDAs 80 feet; increase LNAV Cat C and Circling Cat C visibility ¼ SM.

MISSED APPROACH: Climb to 2000 direct RUCBO and hold.

AWOS-3T <b>118.125</b>	HOUSTON CENTER <b>126.8 327.8</b>	UNICOM <b>122.8 (CTAF) 0</b>
---------------------------	--------------------------------------	---------------------------------



2000  
↑

RUCBO  
✧

RW23

JEGUT

HEVEG

4 NM Holding Pattern

2200

229°

049°

6000

2200

5.3 NM

6.5 NM

CATEGORY	A	B	C	D
LNAV MDA	900-1	412 (500-1)	900-1½ 412 (500-1½)	NA
CIRCLING	940-1 448 (500-1)	1080-1 588 (600-1)	1220-2 728 (800-2)	NA

MIRL Rwy 5-23 0