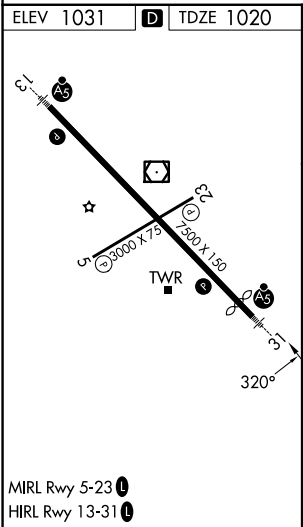
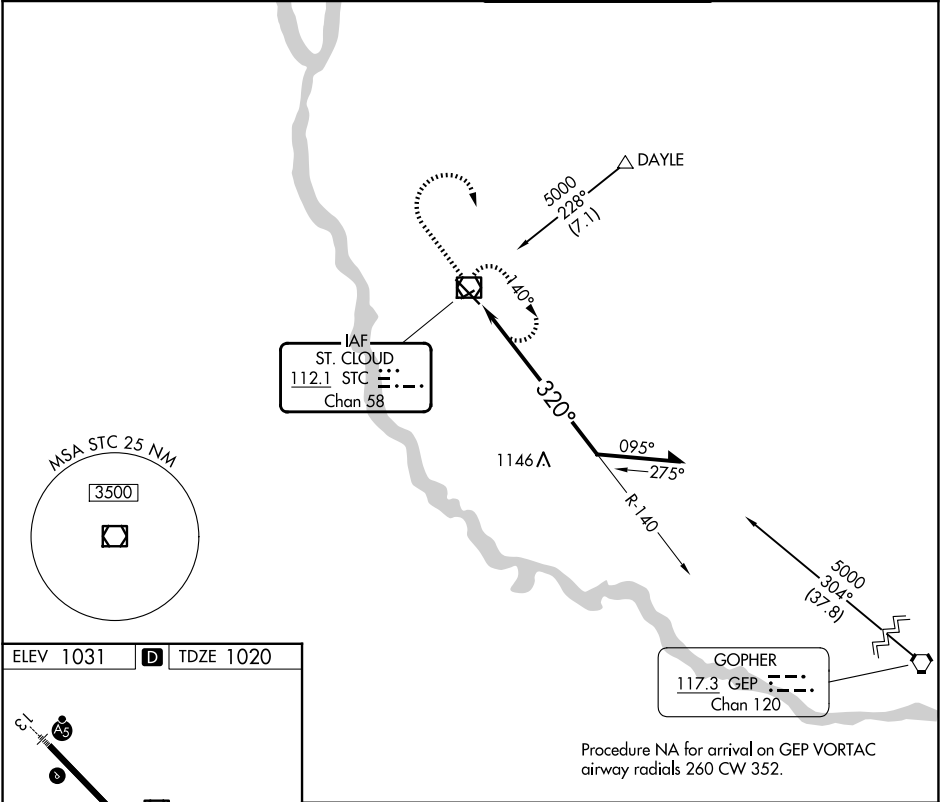





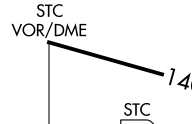
VOR/DME STC	APP CRS	Rwy Ldg TDZE	7000
112.1	320°	1020	
Chan 58		Apt Elev	1031

VOR RWY 31
ST CLOUD RGNL (STC)

<p>⚠ For inop ALS, increase S-31 Cat C and D visibility to 1½ SM.</p>	<p>MALSR</p> <p>MISSED APPROACH: Climb to 2700 then right turn direct STC VOR/DME and hold.</p>
--	---

ATIS 119.375	MINNEAPOLIS CENTER 121.05 235.775	ST. CLOUD TOWER ★ 118.25 (CTAF) 0	GND CON 123.75
-----------------	--------------------------------------	--------------------------------------	-------------------



<div>2700</div> <div></div> <div></div> <div><div>STC</div><div></div></div>		<div><div>STC VOR/DME</div><div></div><div>140°</div><div>320°</div><div>2700</div><div>Remain within 10 NM</div></div>			
CATEGORY	A	B	C	D	
S-31	1460-½	440 (500-½)	1460-¾ 440 (500-¾)	1460-1 440 (500-1)	
CIRCLING	1500-1	469 (500-1)	1620-1½ 589 (600-1½)	1860-2¾ 829 (900-2¾)	

NC-1, 07 AUG 2025 to 04 SEP 2025

NC-1, 07 AUG 2025 to 04 SEP 2025