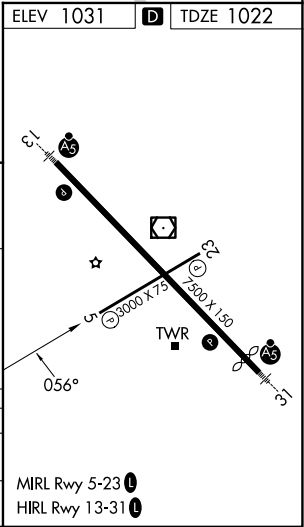
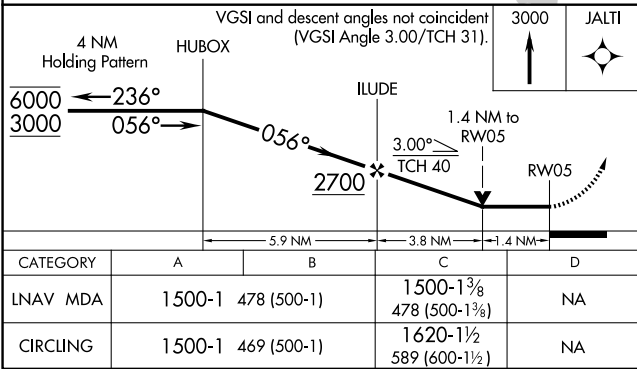
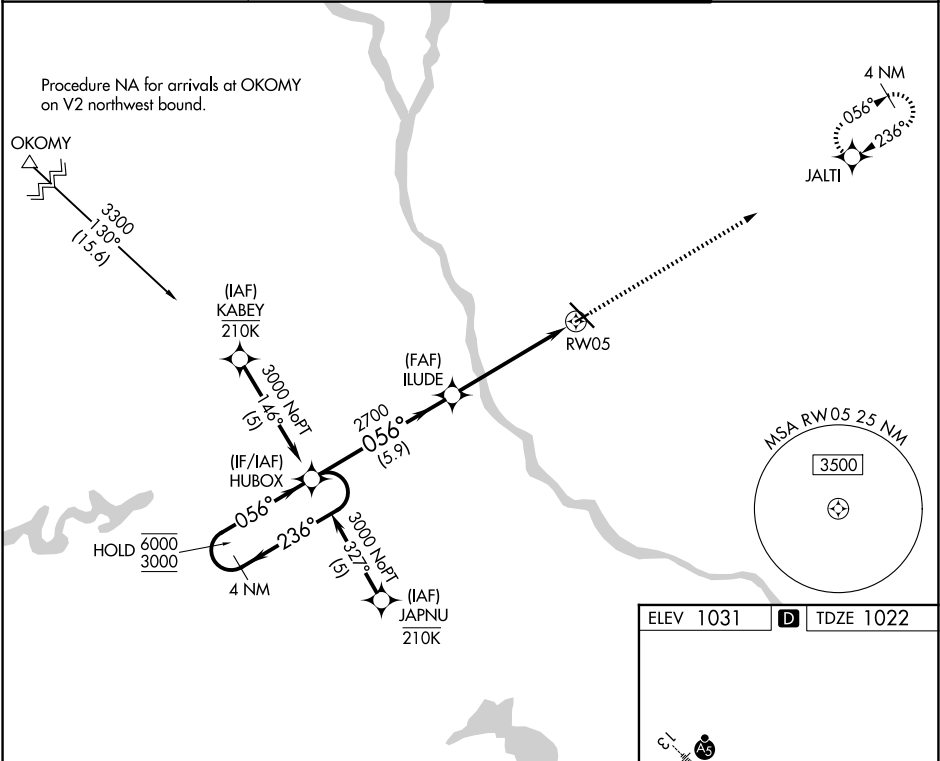


APP CRS	Rwy Ldg	3000
056°	TDZE	1022
	Apt Elev	1031

RNAV (GPS) RWY 5
ST CLOUD RGNL (STC)

RNP APCH - GPS.	MISSED APPROACH: Climb to 3000 direct JALTI and hold.
<div><div></div><div>Rwy 5 helicopter visibility reduction below ¾ SM NA. When local altimeter setting not received, use Little Falls altimeter setting, increase all MDAs 80 feet and LNAV visibility Cat C ¼ SM. VDP NA when using Little Falls altimeter setting.</div></div>	

ATIS 119.375	MINNEAPOLIS CENTER 121.05 235.775	ST. CLOUD TOWER ★ 118.25 (CTAF) 0	GND CON 123.75
-----------------	--------------------------------------	--------------------------------------	-------------------



NC-1, 07 AUG 2025 to 04 SEP 2025

NC-1, 07 AUG 2025 to 04 SEP 2025