

LOC I-BPM	APP CRS	Rwy Ldg	7000
111.9	133°	TDZE	1031
		Apt Elev	1031

ILS or LOC RWY 13
ST CLOUD RGNL (STC)

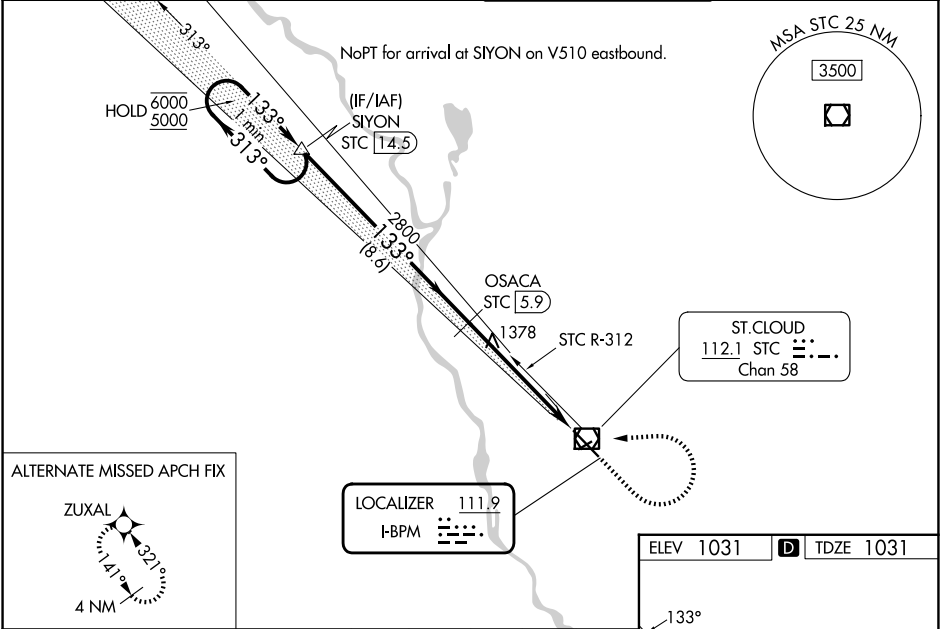
DME required.

⚠ For inop ALS when using Little Falls altimeter setting, increase S-ILS-13 all Cats visibility to 7/8 SM. When local altimeter setting not received, use Little Falls altimeter setting, increase DA to 1307 feet; increase all MDAs 80 feet and S-LOC 13 visibility Cats C and D 1/4 SM, and Circling visibility Cats C and D 1/4 SM. For inop ALS, increase S-LOC 13 Cats C and D visibility to 1 3/4 SM. DME from STC VOR/DME. DME use requires simultaneous reception of I-BPM and STC DME. VDP NA when using Little Falls altimeter setting.

MALSR

MISSED APPROACH: Climb to 2500 then climbing left turn to 5000 direct STC VOR/DME and on STC VOR/DME R-312 to SIYON/STC 14.5 DME and hold.

ATIS 119.375	MINNEAPOLIS CENTER 121.05 235.775	ST. CLOUD TOWER ★ 118.25 (CTAF) 0	GND CON 123.75
-----------------	--------------------------------------	--------------------------------------	-------------------



CATEGORY	SIYON STC 14.5			
	One Minute Holding Pattern			
	GS 3.00° TCH 49			
	2500 5000 STC STC R-312 SIYON			
S-ILS 13	1231-1/2 200 (200-1/2)			
S-LOC 13	1640-1/2 609 (700-1/2) 1640-1 3/8 609 (700-1 3/8)			
CIRCLING	1640-1 609 (700-1) 1640-1 3/4 609 (700-1 3/4) 1860-2 3/4 829 (900-2 3/4)			

ELEV 1031 D TDZE 1031

MIRL Rwy 5-23 0

HIRL Rwy 13-31 0

FAF to MAP 5.4 NM

Knots	60	90	120	150	180
Min:Seq	5:24	3:36	2:42	2:10	1:48

NC-1, 07 AUG 2025 to 04 SEP 2025

NC-1, 07 AUG 2025 to 04 SEP 2025