

WAAS CH 81829 W32A	APP CRS 320°	Rwy Ldg 5701 TDZE 179 Apt Elev 187
--	------------------------	---

RNAV (GPS) RWY 32
STATESBORO-BULLOCH COUNTY (TBR)

RNP APCH-GPS.

⚠ Circling to Rwy 6/24 NA at night. Baro-VNAV NA when using Sylvania altimeter setting. For uncompensated Baro-VNAV systems, LNAV/VNAV NA below -15°C or above 54°C. For inop ALS. Increase LNAV/VNAV all Cats visibility to ½ SM and LNAV Cats C/D to 1½ SM. When local altimeter setting not received. Use Sylvania altimeter setting and increase LPV DA to 408 feet; increase LNAV/VNAV DA to 490 feet; increase all MDAs 40 feet and LNAV visibility Cat C/D ½ SM, and Circling visibility Cat C ¼ SM. For inop ALS when using Sylvania altimeter setting, increase LNAV/VNAV all Cats visibility to ½ SM and LNAV Cats C/D to 1½ SM.

MALSI

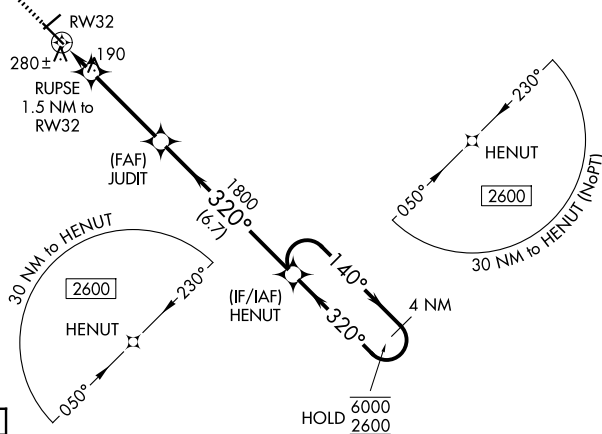
MISSED APPROACH:
Climb to 2600 direct
EPEDE and hold.

AWOS-3
119.025

SAVANNAH APP CON ★
118.4 307.225

UNICOM
122.725 (CTAF) **L**

MISSED APCH FIX



ELEV	187	D	TDZE	179
------	-----	----------	------	-----

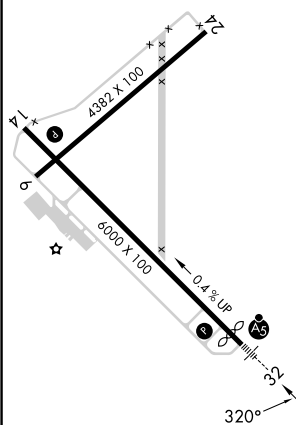
HIRL Rwy 14-32 **L**

Figure 1 is a sample RNAV (RNP) approach chart for RW32. The chart includes a 4 NM Holding Pattern at 2600 feet. The approach path starts at 2600 feet, descends to 1800 feet at a 320° angle, then to 600 feet at a 140° angle. The final approach segment is at 2600 feet. Key waypoints include RW32, JUDIT, and HENUT. The chart also shows the 4 NM Holding Pattern and the 2600 feet altitude.