

WAAS  
CH **49144**  
**W14A**

APP CRS  
**140°**

Rwy Ldg  
TDZE **181**  
Apt Elev **187**

RNAV (GPS) RWY 14

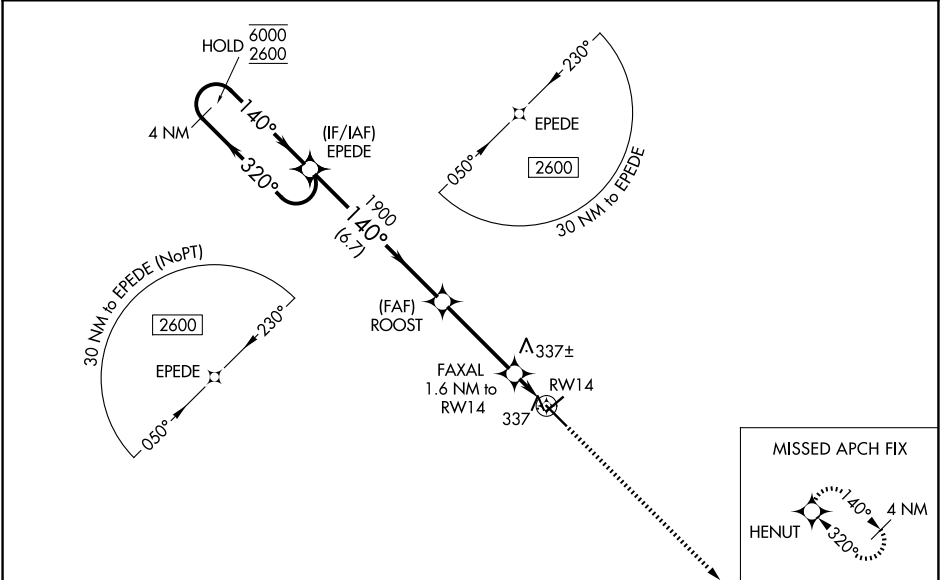
STATESBORO-BULLOCH COUNTY (TBR)

RNP APCH-GPS.

⚠ Circling to Rwy 6/24 NA at night. Baro-VNAV and VDP NA when using Sylvania altimeter setting.  
⚠ Rwy 14 helicopter visibility reduction below ¾ SM NA. For uncompensated Baro-VNAV systems, LNAV/VNAV NA below -15°C or above 54°C. When local altimeter setting not received, use Sylvania altimeter setting and increase LPV DA to 525 feet and all visibilities ¾ SM. Increase LNAV/VNAV DA to 547 feet; increase all MDAs 40 feet and LNAV visibility Cat C/D ¼ SM, and Circling visibility Cat C ¼ SM.

MISSED APPROACH:  
Climb to 2600 direct HENUT and hold.

AWOS-3 <b>119.025</b>	SAVANNAH APP CON ★ <b>118.4 307.225</b>	UNICOM <b>122.725 (CTAF) 0</b>
--------------------------	--	-----------------------------------



ELEV 187

TDZE 181

VGSI and RNAV glidepath not coincident (VGSI Angle 4.00/TCH 42).

4 NM Holding Pattern

EPEDE

ROOST

FAXAL 1.6 NM to RW14

HENUT

GP 3.00° TCH 45

6000

2600

1900

740

6.7 NM

3.6 NM

0.7 NM

0.9 NM

4382 X 100

6000 X 100

0.4 % UP

HIRL Rwy 14-32 0

CATEGORY	A	B	C	D
LPV DA		496-7 <sup>8</sup> / <sub>8</sub>	315 (400-7 <sup>8</sup> / <sub>8</sub> )	
LNAV/VNAV DA		518-1	337 (400-1)	
LNAV MDA	600-1	419 (500-1)	600-1 <sup>1</sup> / <sub>8</sub>	419 (500-1 <sup>1</sup> / <sub>8</sub> )
CIRCLING	640-1 453 (500-1)	740-1 553 (600-1)	840-1 <sup>3</sup> / <sub>4</sub> 653 (700-1 <sup>3</sup> / <sub>4</sub> )	860-2 <sup>1</sup> / <sub>4</sub> 673 (700-2 <sup>1</sup> / <sub>4</sub> )