

LOC I-BZQ	APP CRS	Rwy Ldg	5701
111.5	320°	TDZE	179
		Apt Elev	187

ILS or LOC RWY 32
STATESBORO-BULLOCH COUNTY (TBR)

ADF required.

▼

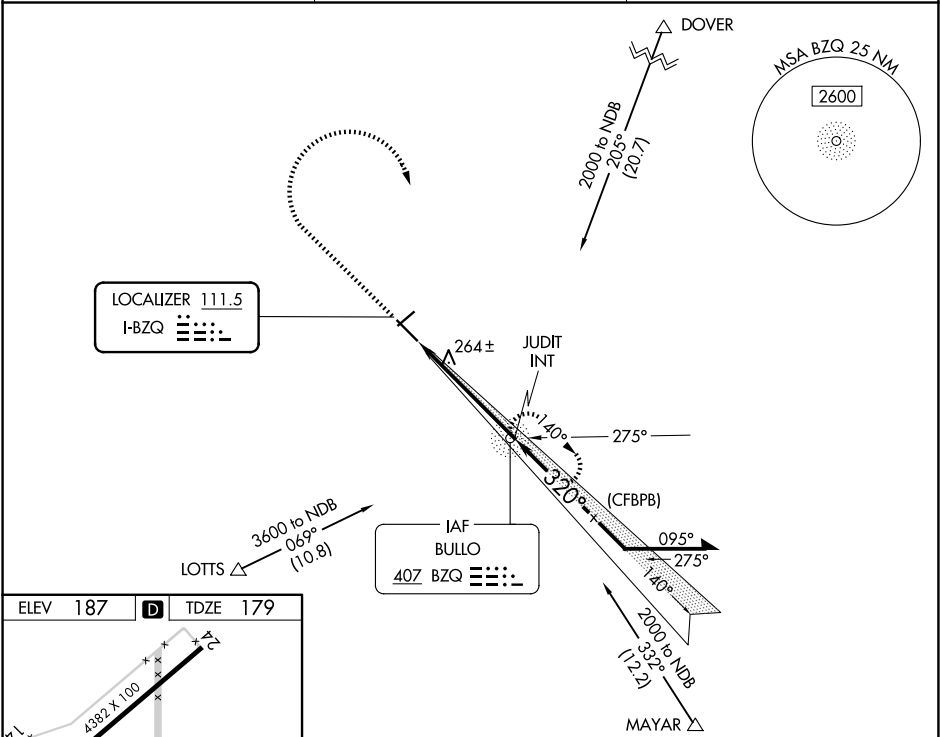
▲

Circling to Rwy 6, 24 NA at night. When local altimeter setting not received, use JYL altimeter setting and increase S-ILS 32 DA to 408 feet; increase all MDAs 40 feet; and Circling visibility Cat C ¼ SM. For inop ALS, increase S-LOC 32 Cat C and D visibility to 1 SM.

MALSR

MISSED APPROACH: Climb to 1300 then climbing right turn to 2000 direct BZQ NDB and hold.

AWOS-3 119.025	SAVANNAH APP CON ★ 118.4 307.225	UNICOM 122.725 (CTAF) 0
-------------------	-------------------------------------	----------------------------



ELEV 187 D TDZE 179

1300 2000 BZQ

Remain within 10 NM

JUDIT INT 1800

140° 2000

320° 1800

GS 3.00° TCH 49

CATEGORY	A	B	C	D
S-ILS 32	379-½ 200 (200-½)			
S-LOC 32	520-½ 341 (400-½)	520-5/8 341 (400-5/8)		
CIRCLING	640-1 453 (500-1)	740-1 553 (600-1)	840-1 3/4 653 (700-1 3/4)	860-2 1/4 673 (700-2 1/4)

SE-4, 07 AUG 2025 to 04 SEP 2025

SE-4, 07 AUG 2025 to 04 SEP 2025