

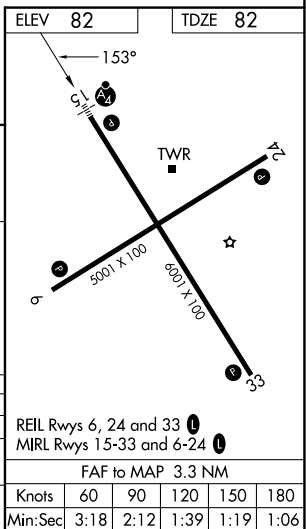
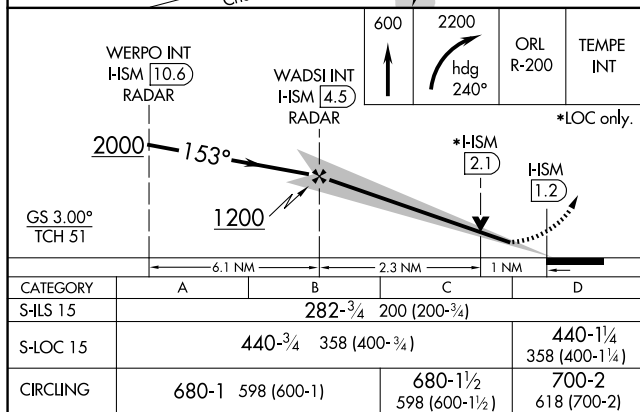
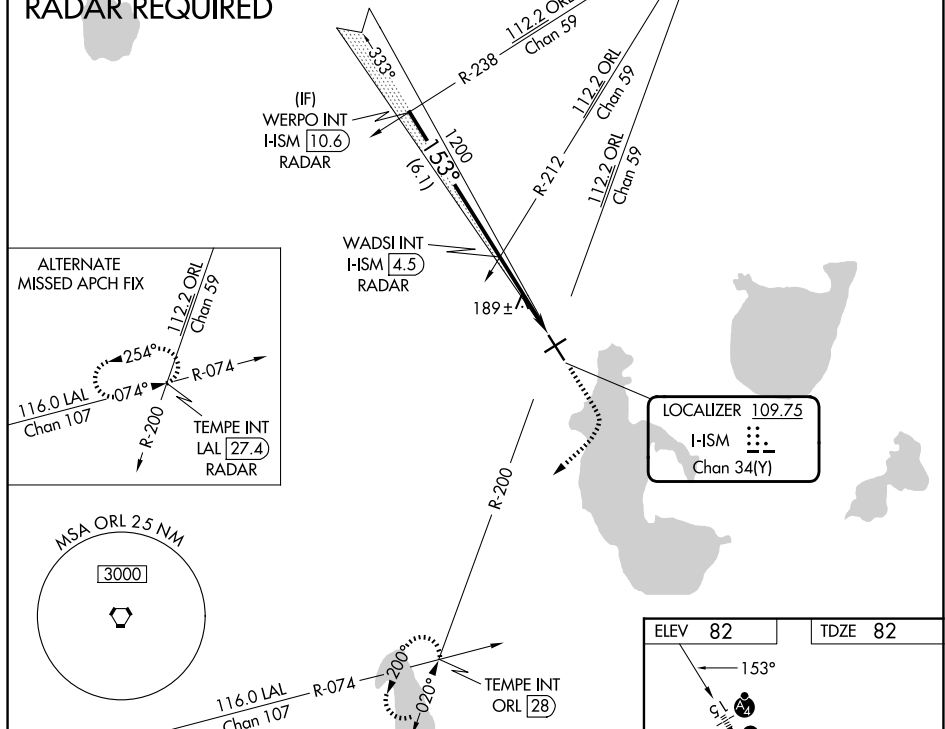
ILS or LOC RWY 15
KISSIMMEE GATEWAY (TSM)

MALSF

MISSED APPROACH: Climb to 600 then climbing right turn to 2200 on heading 240° and ORL VORTAC R-200 to TEMPE INT/ORL 28 DME and hold.

ATIS 128.775	ORLANDO APP CON 119.4 351.9	KISSIMMEE TOWER ★ 124.45 (CTAF) 0	CLNC DEL 121.7	CLNC DEL 123.95 (When twr closed)	GND CON 121.7	UNICOM 122.95
------------------------	---------------------------------------	---	--------------------------	--	-------------------------	-------------------------

RADAR REQUIRED



SE-3, 07 AUG 2025 to 04 SEP 2025