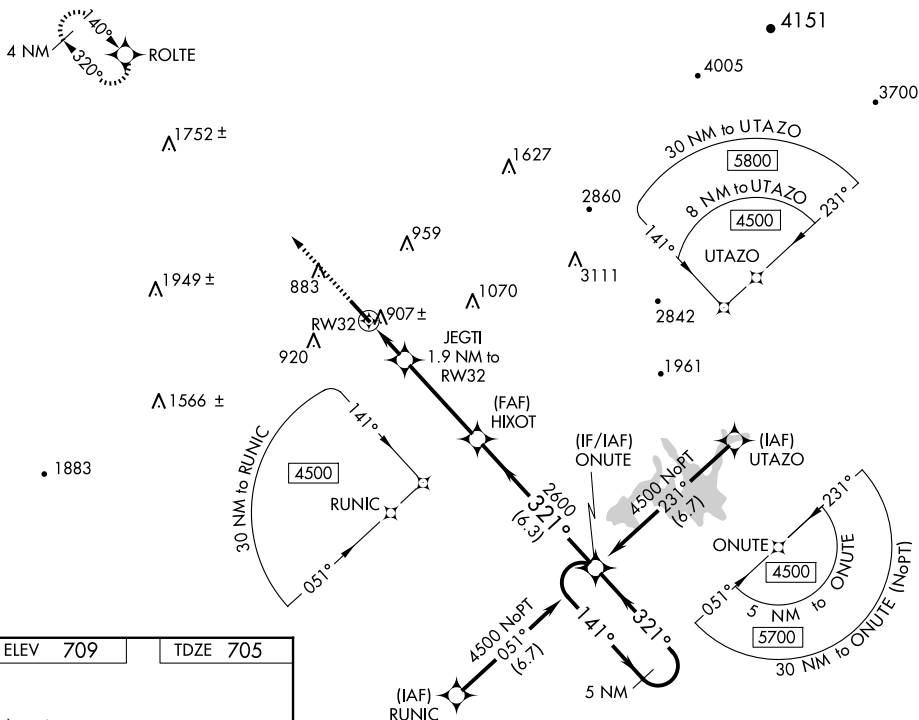


RNAV (GPS) RWY 32
DALTON MUNI (DNN)

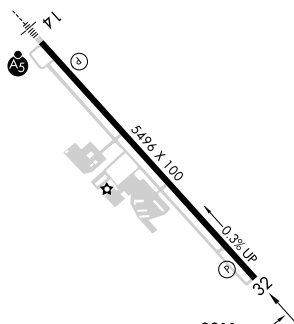
T	Rwy 32 helicopter visibility reduction below 1 SM NA.
A	Straight-in Rwy 32 NA at night, Circling Rwy 32 NA at night.

MISSED APPROACH: Climb to 3800 direct ROLTE and hold, continue climb-in-hold to 3800.

UNICOM
122.975 (CTAF) **L**



Downloaded from <http://ajph.org/> at University of California, San Diego on September 11, 2014



34°43'N-84°52'W

RNAV (GPS) RWY 32

SE-4, 07 AUG 2025 to 04 SEP 2025