

WAAS CH 45717 W20A	APP CRS 202°	Rwy Idg TDZE Apt Elev	6450 874 874
--	------------------------	-----------------------------	---

RNAV (GPS) RWY 20

MCMINN COUNTY (MMI)

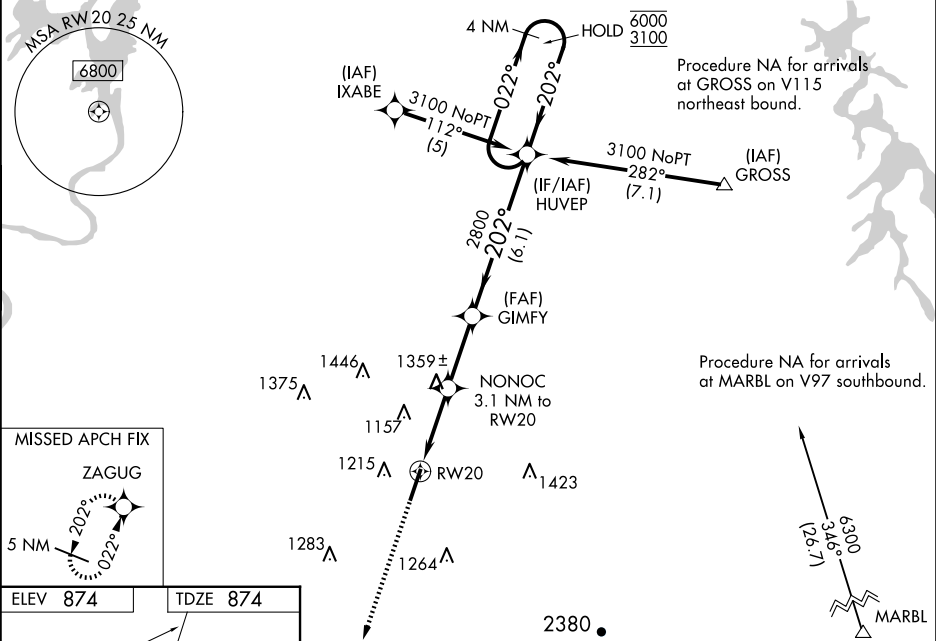
RNP APCH - GPS.

- ⚠ Circling Rwy 2 NA at night. Baro-VNAV and VDP NA when using Mc Ghee Tyson altimeter setting.

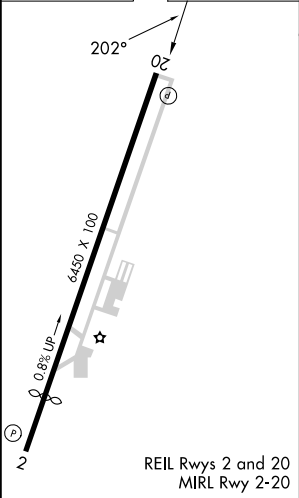
⚠ Rwy 20 helicopter visibility reduction below ¾ SM NA. For uncompensated Baro-VNAV systems, LNAV/VNAV NA below -16°C or above 54°C. When local altimeter setting not received, use Mc Ghee Tyson altimeter setting: increase LPV DA to 1275 feet and visibility all Cats ½ SM; increase LNAV/VNAV DA to 1819 feet and visibility all Cats 1½ SM; increase all MDAs 120 feet and LNAV visibility Cat C and D ½ SM, and Circling visibility Cat A and C ¼ SM.

MISSED APPROACH:
Climb to 4100 direct
ZAGUG and hold.

AWOS-3 125.425	KNOXVILLE APP CON 123.9 353.6	UNICOM 122.8 (CTAF)
--------------------------	---	-------------------------------



ELEV 874	TDZE 874
----------	----------



4100	ZAGUG	NONOC	GIMFY	HUVEP	4 NM Holding Pattern
2.2 NM to RW20	3.1 NM to RW20	2800	202°	022°	6000
1900	2800	202°	022°	3100	
2.2	0.9	2.7 NM	6.1 NM		
CATEGORY	A	B	C	D	
LPV DA	1174-1	300 (300-1)			
LNAV/VNAV DA	1718-2½	844 (900-2½)			
LNAV MDA	1620-1 746 (800-1)	1620-1¼ 746 (800-1¼)	1620-2 746 (800-2)		
CIRCLING	1620-1 746 (800-1)	1620-1¼ 746 (800-1¼)	1620-2¼ 746 (800-2¼)	1820-3 946 (1000-3)	