

APP CRS	Rwy Idg	5501
022°	TDZE	846
	Apt Elev	874

RNAV (GPS) RWY 2

MCMINN COUNTY (MMI)

RNP APCH - GPS.

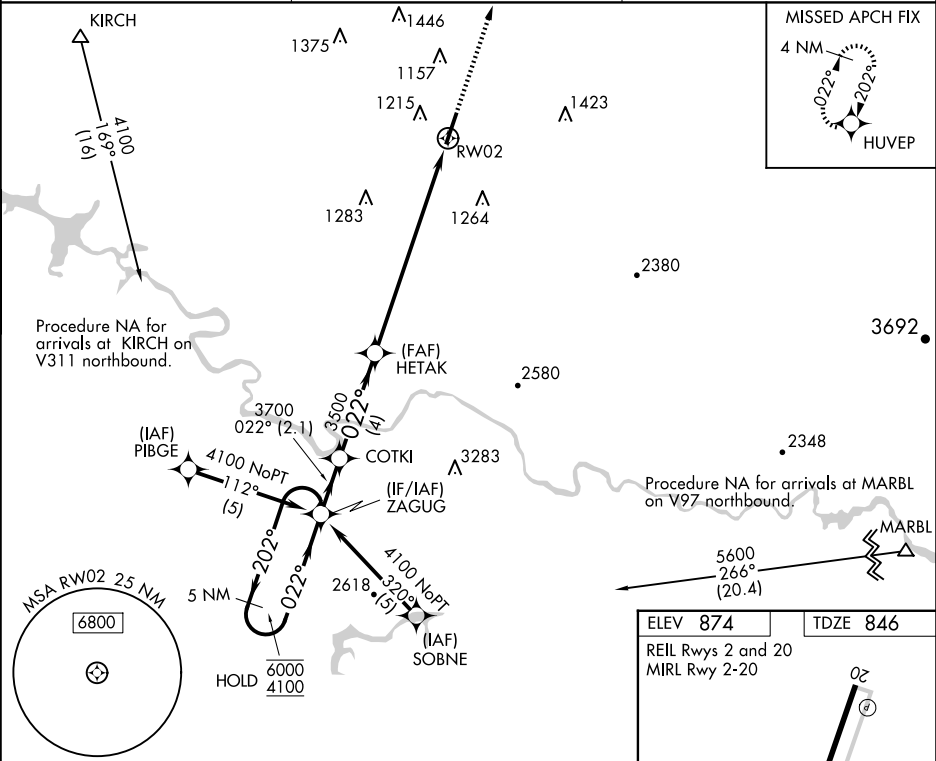
▼

▲

Rwy 2 helicopter visibility reduction below 1 SM NA. Straight-in Rwy 2 NA at night. Circling Rwy 2 NA at night. When local altimeter setting not received, use Mc Ghee Tyson altimeter setting and increase all MDAs 120 feet, and LNAV visibility Cats C and D ½ SM, and Circling visibility Cat A ¼ SM and Cat C ½ SM.

MISSED APPROACH:
Climb to 3100 direct
HUVEP and hold.

AWOS-3 125.425	KNOXVILLE APP CON 123.9 353.6	UNICOM 122.8 (CTAF)
-------------------	----------------------------------	------------------------



5 NM Holding Pattern				
ZAGUG				
6000 4100 202° 022° 022°				
COTKI				
HETAK 3700 3500				
RW02 3.00° TCH 40				
2.1 NM 4 NM 8.1 NM				
CATEGORY	A	B	C	D
LNAV MDA	1600-1 754 (800-1)	1600-1¼ 754 (800-1¼)	1600-2 754 (800-2)	754 (800-2)
CIRCLING	1600-1 726 (800-1)	1600-1¼ 726 (800-1¼)	1600-2 726 (800-2)	1820-3 946 (1000-3)