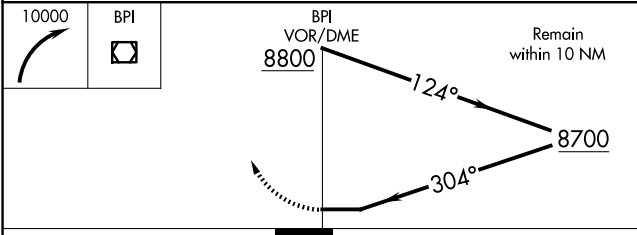
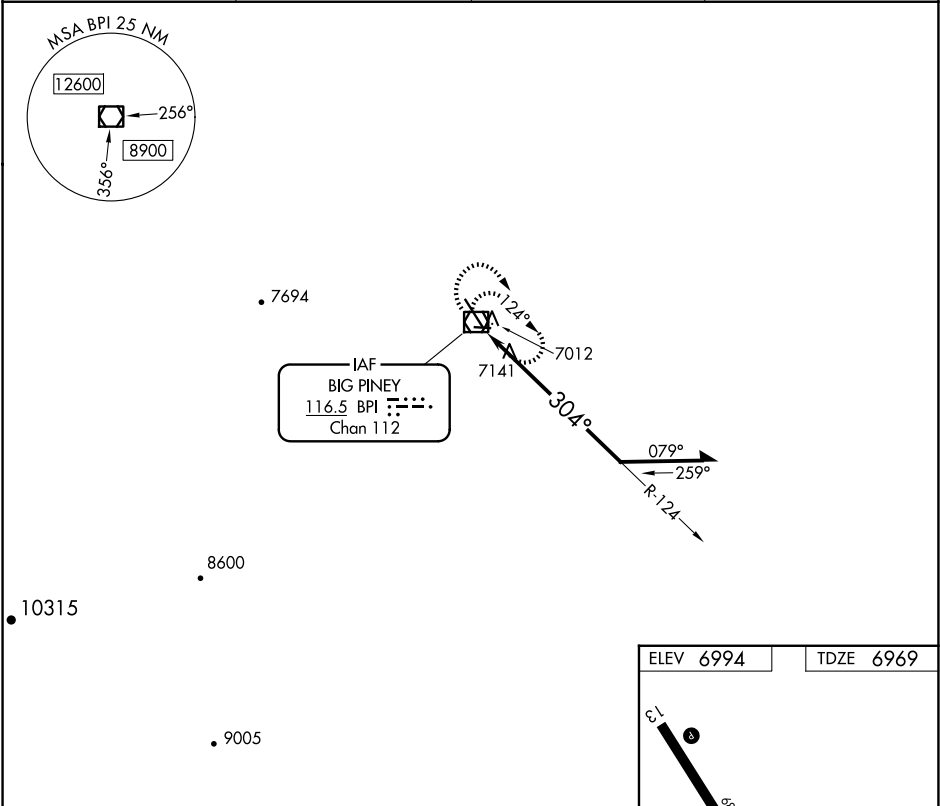


VOR/DME BPI	APP CRS	Rwy Idg	6803
116.5	304°	TDZE	6969
Chan 112		Apt Elev	6994

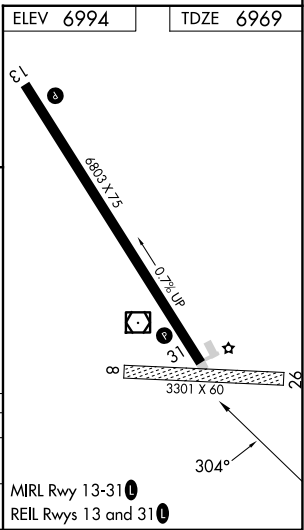
VOR RWY 31  
MILEY MEML FLD (BPI)

NA	Circling NA to Rwy 8 and 26.	MISSED APPROACH: Climbing right turn to 10000 in BPI VOR/DME holding pattern.
----	------------------------------	---

ASOS 135.225	SALT LAKE CENTER 128.35 239.25	UNICOM 122.8 (CTAF)	122.70
-----------------	-----------------------------------	------------------------	--------



CATEGORY	A	B	C	D
S-31	7680-1	711 (700-1)	7680-2	711 (700-2)
CIRCLING	7680-1	686 (700-1)	7800-2¼ 806 (900-2¼)	7820-2¾ 826 (900-2¾)



NW-1, 07 AUG 2025 to 04 SEP 2025

NW-1, 07 AUG 2025 to 04 SEP 2025