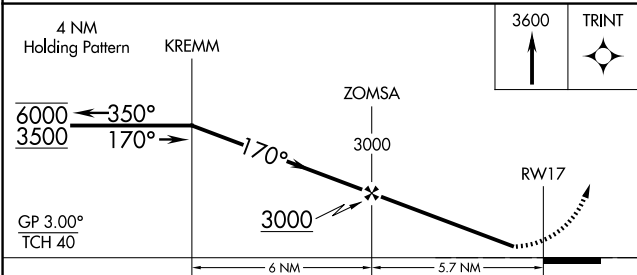
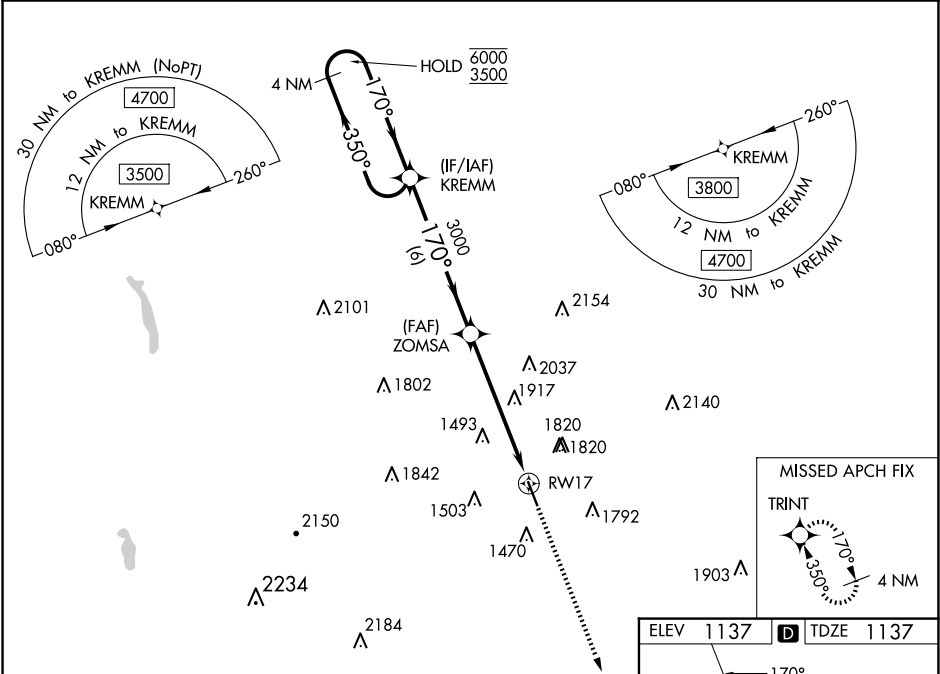


WAAS CH <b>65818</b> <b>W17A</b>	APP CRS <b>170°</b>	Rwy Idg TDZE <b>1137</b> Apt Elev <b>1137</b>
--	------------------------	---

RNAV (GPS) RWY 17  
HAMILTON MUNI (VGC)

RNP APCH - GPS. ▼ Rwy 17 helicopter visibility reduction below 1 SM NA. For uncompensated Baro-VNAV systems, LNAV/VNAV NA below -17°C or above 54°C. Straight-In and Circling Rwy 17 NA at night. ▲ NA		MISSED APPROACH: Climb to 3600 direct TRINT and hold.
--	--	--

AWOS-3P <b>119.425</b>	SYRACUSE APP CON <b>126.125 269.125</b>	UNICOM <b>123.0</b> (CTAF)	<b>122.7</b> ①
---------------------------	--	-------------------------------	----------------



CATEGORY	A	B	C	D
LPV DA	1447-7/8	310 (400-7/8)		NA
LNAV/VNAV DA	2412-5	1275 (1300-5)		NA
LNAV MDA	2220-1 1/4 1083 (1100-1 1/4)	2220-1 1/2 1083 (1100-1 1/2)	2220-3 1083 (1100-3)	NA
Ⓢ CIRCLING	2220-1 1/4 1083 (1100-1 1/4)	2220-1 1/2 1083 (1100-1 1/2)	2340-3 1203 (1300-3)	NA

