

WAAS		Rwy Ldg	5801
CH 42901	APP CRS	TDZE	730
W18A	185°	Apt Elev	730

RNAV (GPS) RWY 18

WATERBURY-OXFORD (OXC)

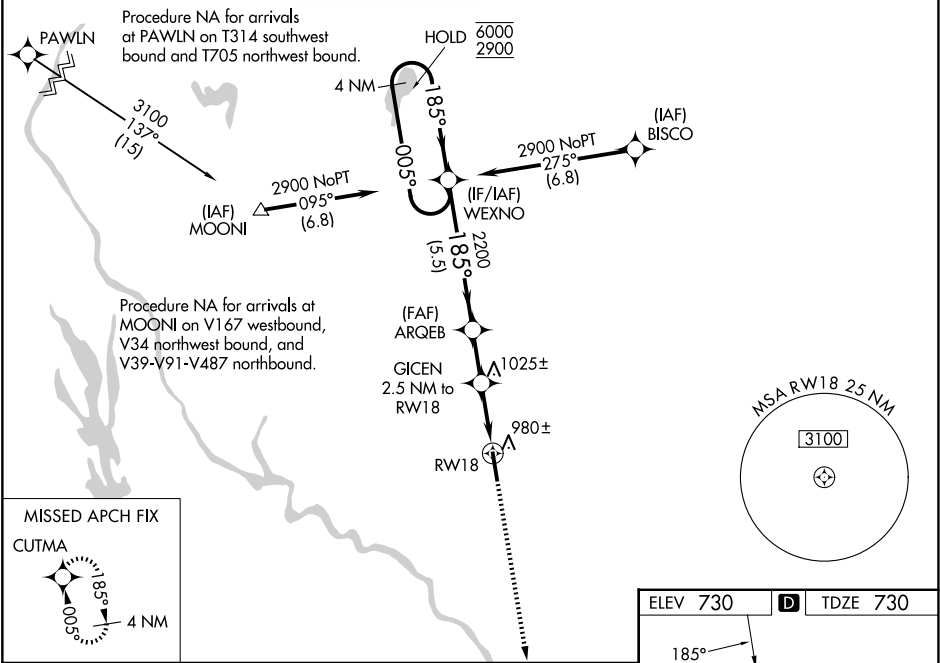
RNP APCH - GPS.

⚠

Rwy 18 helicopter visibility reduction below 3/4 SM NA. For uncompensated Baro-VNAV systems, LNAV/VNAV NA below -17°C or above 54°C. Baro-VNAV and VDP NA when using DXR altimeter setting. When local altimeter setting not received, use DXR altimeter setting: increase LPV DA to 1218 feet and all visibilities 1/4 SM; increase LNAV/VNAV DA to 1219 feet and all visibilities 1/4 SM; increase all MDAs 80 feet and LNAV visibility Cat C and D 3/4 SM, and Circling visibility Cat C and D 1/4 SM.

MISSED APPROACH: Climb to 2600 direct CUTMA and hold.

ATIS 132.975	NEW YORK APP CON 124.075 343.65	OXFORD TOWER ★ 118.475 (CTAF) 0	GND CON 121.65	CLNC DEL 121.65	CLNC DEL 135.1 (When twr closed)	UNICOM 122.95
-----------------	------------------------------------	------------------------------------	-------------------	--------------------	--	------------------



4 NM Holding Pattern WEXNO		ARQEB		GICEN 2.5 NM to RW18	
6000 2900		2200		1580	
GP 3.00° TCH 47		2200		1580	
5.5 NM		2 NM		1.1 NM 1.5 NM	
CATEGORY	A	B	C	D	
LPV DA	1140-1 1/8		410 (500-1 1/8)		
LNAV/VNAV DA	1141-1 1/8		411 (500-1 1/8)		
LNAV MDA	1240-1 510 (600-1)		1240-1 3/8 510 (600-1 3/8)		
CIRCLING	1360-1 630 (700-1)		1380-1 3/4 650 (700-1 3/4) 1460-2 1/4 730 (800-2 1/4)		

