

APP CRS
143°

Rwy Ldg
TDZE
121

Apt Elev
121

RNP APCH - GPS.

▼

▲ NA

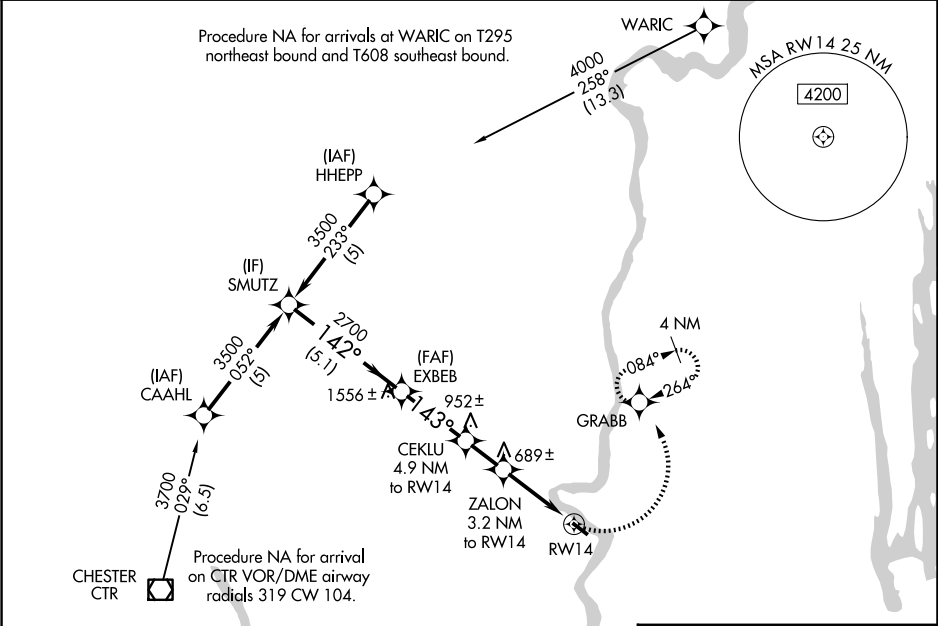
❄ -24°C

Procedure NA at night. Obtain local altimeter setting on CTAF; when not received, use Windsor Locks altimeter setting. Rwy 14 helicopter visibility reduction below 1 SM NA.

RNAV (GPS) RWY 14

NORTHAMPTON (7B2)

YANKEE APP CON 125.35 281.5	CLNC DEL 133.6	UNICOM 122.7 (CTAF) 0
---------------------------------------	--------------------------	---------------------------------



VGSI and descent angles not coincident (VGSI Angle 4.50/TCH 60).
* 1820 when using Windsor Locks altimeter setting.
** 1260 when using Windsor Locks altimeter setting.

SMUTZ 3500

EXBEB

CEKLU 4.9 NM to RW14

ZALON 3.2 NM to RW14

RW14

Procedure Turn NA

3000

GRABB

142°

143°

3.07° TCH 40

1740

1180

5.1 NM

2.9 NM

1.7 NM

3.2

CATEGORY	A	B	C	D
RNAV MDA	940-1 819 (900-1)	940-1¼ 819 (900-1¼)		NA
CIRCLING	940-1¼ 819 (900-1¼)	1400-1½ 1279 (1300-1½)		NA
WINDSOR LOCKS ALTIMETER SETTING MINIMUMS				
RNAV MDA	1020-1¼	899 (900-1¼)		NA
CIRCLING	1020-1¼ 899 (900-1¼)	1460-1½ 1339 (1400-1½)		NA

ELEV 121

TDZE 121

143°

3335 X 50

0 31

MIRL Rwy 14-32 0