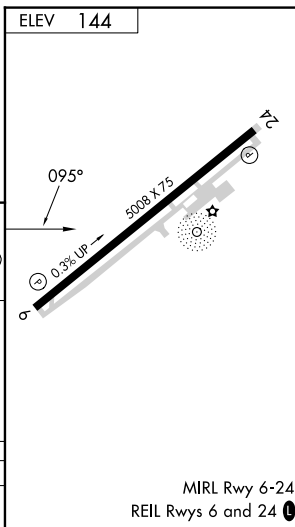
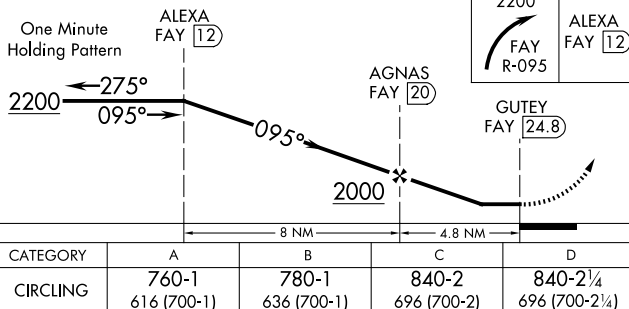
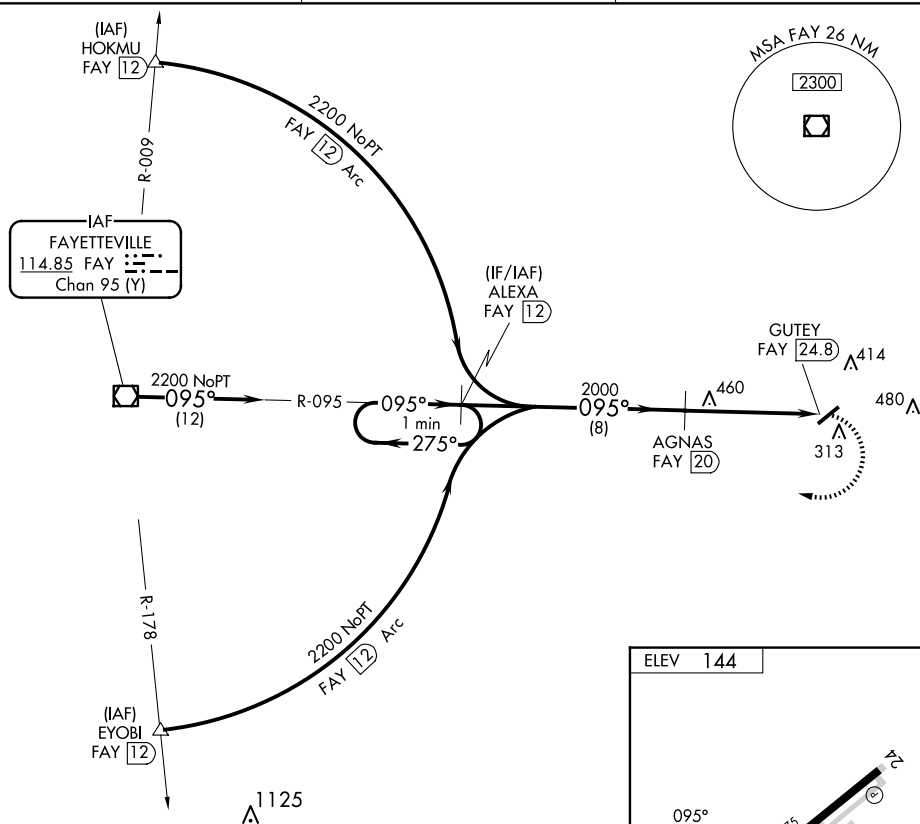


23054

VOR/DME-A
CLINTON-SAMPSON COUNTY (CTZ)

MISSED APPROACH: Climbing right turn to 2200 on FAY VOR/DME R-095 to ALEXA/FAY 12 DME and hold.

UNICOM
122.8 (CTAF) **L**

CLINTON-SAMPSON COUNTY (CTZ)
VOR/DME-A

MIRL Rwy 6-24
REIL Rwy 6 and 24 **L**

SE-2, 07 AUG 2025 to 04 SEP 2025