

WAAS CH 82620 W24A	APP CRS 240°	Rwy Idg TDZE Apt Elev	5008 144 144
--	------------------------	-----------------------------	---

RNAV (GPS) Z RWY 24

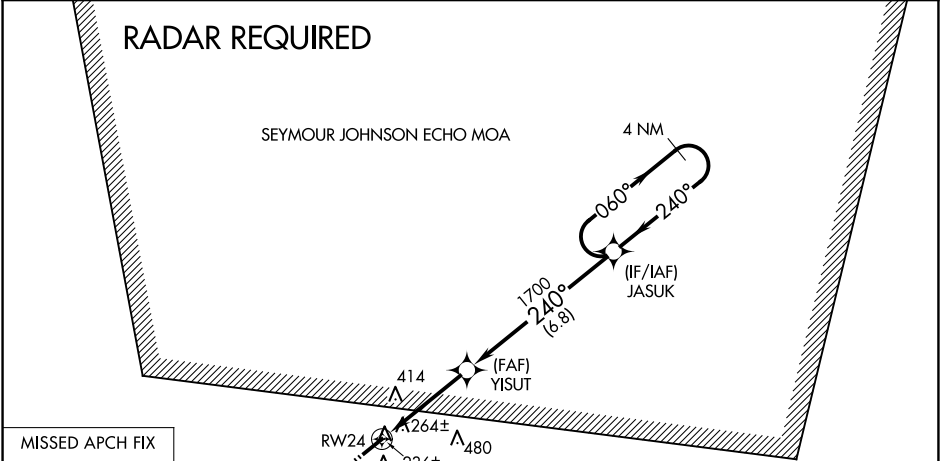
CLINTON-SAMPSON COUNTY (CTZ)

RNP APCH-GPS.

Baro-VNAV NA when using DPL altimeter setting. For uncompensated Baro-VNAV systems, LNAV/VNAV NA below -15°C or above 46°C. When local altimeter setting not received, use DPL altimeter setting and increase all DA 45 feet, increase LNAV/VNAV Cats A/B/C visibility 1/8 mile. Rwy 24 helicopter visibility reduction below 3/4 SM NA.

MISSED APPROACH: Climb to 2500 direct WEXES and hold.

AWOS-3 119.125	FAYETTEVILLE APP CON 133.0 290.25	UNICOM 122.8 (CTAF) 1
--------------------------	---	---------------------------------



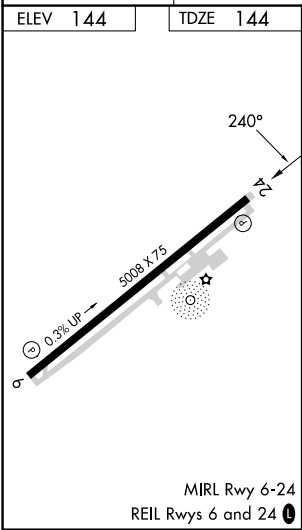
MISSED APCH FIX

WEXES

060°

240°

4 NM



2500	WEXES	VGSI and RNAV glidepath not coincident (VGSI Angle 3.00/TCH 40).			
		JASUK	4 NM Holding Pattern	2500	
		YISUT	1700	060°	240°
		RW24	1700	GP 3.60°	TCH 58
		3.9 NM	6.8 NM		
CATEGORY	A	B	C	D	
LPV DA	470-1	326 (400-1)		NA	
LNAV/VNAV DA	566-1 1/4	422 (500-1 1/4)		NA	