

WAAS CH <b>99321</b> <b>W24B</b>	APP CRS <b>240°</b>	Rwy Idg <b>5002</b> TDZE <b>144</b> Apt Elev <b>144</b>
--	------------------------	---

RNAV (GPS) Y RWY 24

CLINTON-SAMPSON COUNTY (CT'Z)

RNP APCH-GPS.

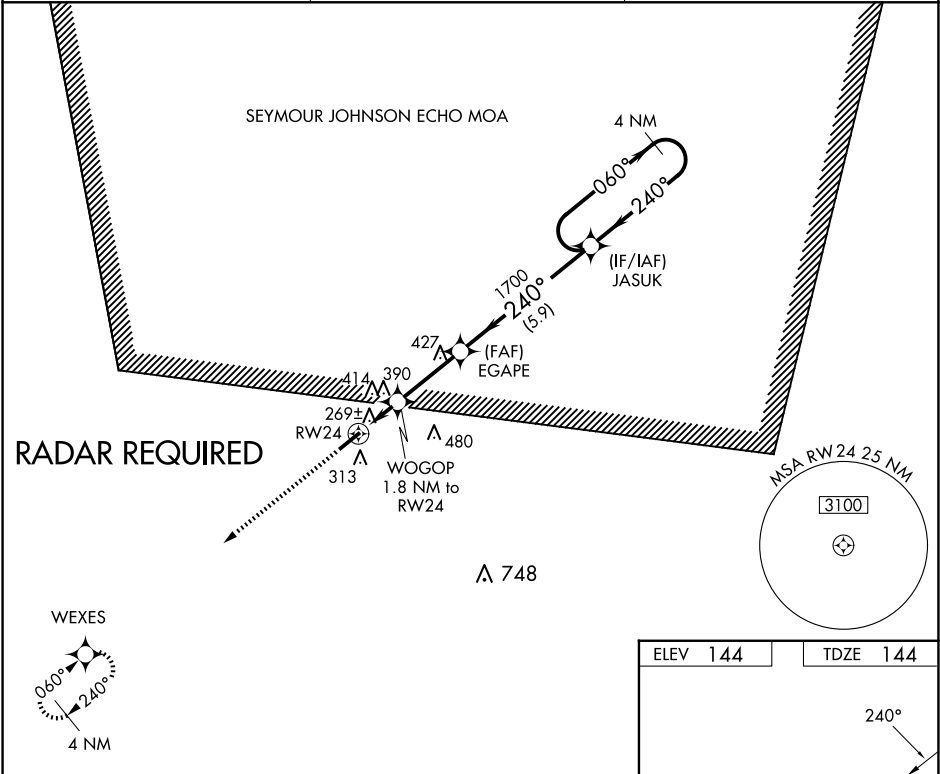
▼

⚠

Rwy 24 helicopter visibility reduction below ¾ SM NA. When local altimeter setting not received, use DPL altimeter setting and increase all MDAs 60 feet and visibility Cats C and D ¼ SM.

MISSED APPROACH: Climb to 2500 direct WEXES and hold.

AWOS-3 <b>119.125</b>	FAYETTEVILLE APP CON <b>133.0 290.25</b>	UNICOM <b>122.8 (CTAF) 0</b>
--------------------------	---	---------------------------------



2500

WEXES

VGSI and descent angles not coincident (VGSI Angle 3.00/TCH 40). JASUK

WOGOP 1.8 NM to RW24

EGAPE

4 NM Holding Pattern

060° → 2500

← 240°

3.00° TCH 45

1700

760

1.8

3 NM

5.9 NM

CATEGORY	A	B	C	D
LP MDA	560-1	416 (500-1)	560-1½	416 (500-1½)
LNAV MDA	640-1	496 (500-1)	640-1¾	496 (500-1¾)
CIRCLING	680-1 536 (600-1)	780-1 636 (700-1)	840-2 696 (700-2)	840-2¼ 696 (700-2¼)

