

RNP APCH - GPS.

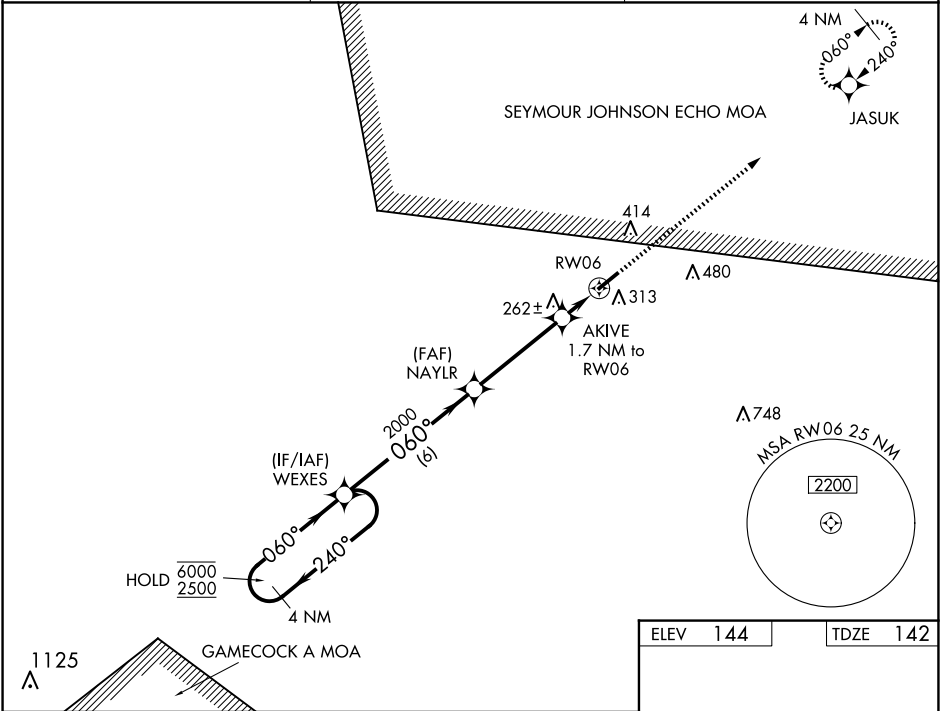
▼

▲

Rwy 6 helicopter visibility reduction below ¾ SM NA.
For uncompensated Baro-VNAV systems, LNAV/VNAV NA below -15°C or above 54°C.

MISSED APPROACH:
Climb to 2500 direct
JASUK and hold.

AWOS-3 119.125	FAYETTEVILLE APP CON 133.0 290.25	UNICOM 122.8 (CTAF) 0
-------------------	--------------------------------------	--------------------------



4 NM Holding Pattern

WEXES

NAYLR

AKIVE 1.7 NM to RW06

2500 JASUK

GP 3.00° TCH 39

6000 2500

2000 700

6 NM 4.1 NM 0.6 1.1

CATEGORY	A	B	C	D
LPV DA		392-¾	250 (300-¾)	
LNAV/ VNAV DA		545-1⅛	403 (500-1⅛)	
LNAV MDA		520-1	378 (400-1)	
CIRCLING	680-1 536 (600-1)	780-1 636 (700-1)	840-2 696 (700-2)	840-2¼ 696 (700-2¼)

