

WAAS CH 81919 W33A	APP CRS 332°	Rwy Idg TDZE Apt Elev	4001 730 730
--	------------------------	-----------------------------	---

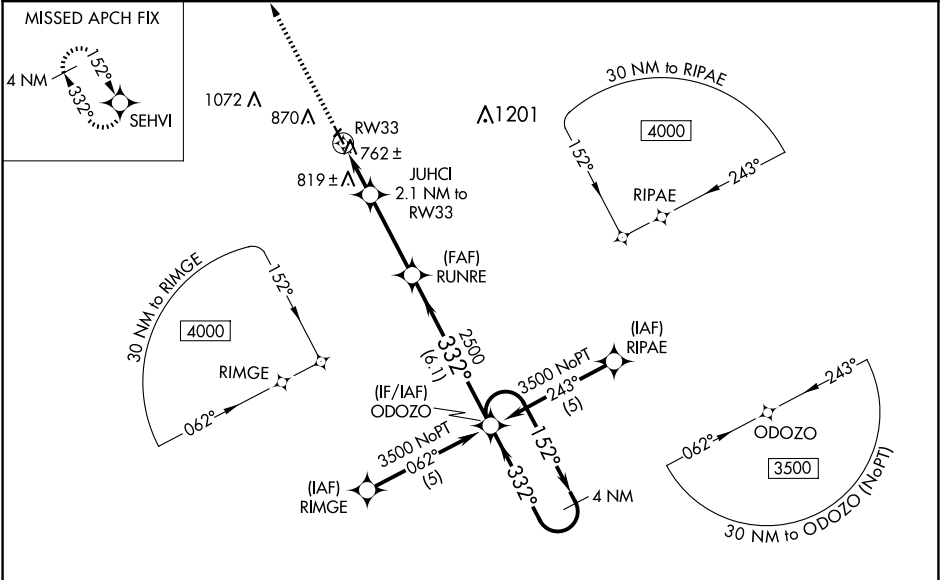
RNAV (GPS) RWY 33

MOUNT PLEASANT MUNI (MPZ)

Baro-VNAV NA when using Burlington altimeter setting. For uncompensated Baro-VNAV systems, LNAV/VNAV NA below -16°C (4°F) or above 54°C (130°F). DME/DME RNP-0.3 NA. Visibility reduction by helicopters NA. When VGSI inoperative, straight-in minimums NA at night. When local altimeter setting not received, use Burlington altimeter setting: increase LPV DA to 1031 feet, LNAV/VNAV DA to 1073 feet and all LNAV/VNAV visibilities ¼ mile; increase all MDA 60 feet, and LNAV and Circling Cat C visibility ¼ mile. Circling NA to Rwy 3/21.

MISSED APPROACH:
Climb to 3500 direct SEHVI and hold.

AWOS-3 119.325	CHICAGO CENTER 135.6 316.1	UNICOM 123.05 (CTAF) 0
--------------------------	--------------------------------------	----------------------------------



ELEV 730

TDZE 730

3500 SEHVI

VGSI and RNAV glidepath not coincident (VGSI Angle 3.00/TCH 29).

ODOZO 4 NM Holding Pattern

*LNAV only

JUHCL 2.1 NM to RW33

RW33

RUNRE 2500

ODOZO 3500

GP 3.00° TCH 40

1420*

2500

332°

152°

332°

2.1 NM

3.3 NM

6.1 NM

CATEGORY	A	B	C	D
LPV DA	980-1	250 (300-1)		NA
LNAV/VNAV DA	1022-1	292 (300-1)		NA
LNAV MDA	1080-1	350 (400-1)		NA
CIRCLING	1220-1 490 (500-1)	1360-1 630 (700-1)	1420-2 690 (700-2)	NA

REIL Rwys 15 and 33 0

MIRL Rwy 15-33 0