

WAAS  
CH **86819**  
**W15A**

APP CRS  
**152°**

Rwy Idg  
TDZE **730**  
Apt Elev **730**

**RNAV (GPS) RWY 15**

MOUNT PLEASANT MUNI (MPZ)

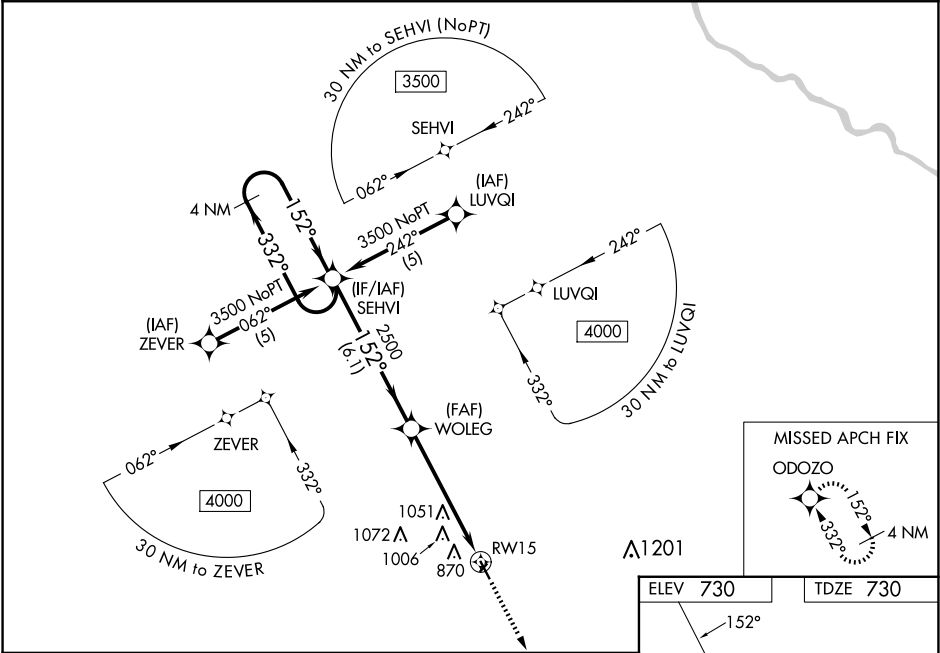
▼

▲

Baro-VNAV NA when using Burlington altimeter setting. For uncompensated Baro-VNAV systems, LNAV/VNAV NA below -16°C (4°F) or above 54°C (130°F). DME/DME RNP-0.3 NA. Visibility reduction by helicopters NA. When VGSI inoperative, straight-in minimums NA at night. When local altimeter setting not received, use Burlington altimeter setting: increase LPV DA to 1031 feet, LNAV/VNAV DA to 1394 feet and all LNAV/VNAV visibilities ¼ mile; increase all MDA 60 feet, increase LNAV and Circling Cat C visibility ¼ mile. Circling NA to Rwy 3/21.

MISSED APPROACH:  
Climb to 3500 direct  
ODOZO and hold.

AWOS-3 <b>119.325</b>	CHICAGO CENTER <b>135.6 316.1</b>	UNICOM <b>123.05 (CTAF) 0</b>
--------------------------	--------------------------------------	----------------------------------



4 NM Holding Pattern

SEHVI

WOLEG

RW15

3500

2500

2500

6.1 NM

5.4 NM

GP 3.00°  
TCH 35

3500

ODOZO

CATEGORY	A	B	C	D
LPV DA	980-1	250 (300-1)		NA
LNAV/VNAV DA	1343-2¼	613 (700-2¼)		NA
LNAV MDA	1360-1	630 (700-1)	1360-1¾ 630 (700-1¾)	NA
CIRCLING	1360-1	630 (700-1)	1420-2 690 (700-2)	NA

ELEV 730

TDZE 730

152°

51

780

1967 X 120

4001 X 75

33

REIL Rwy 15 and 33 0

MRL Rwy 15-33 0