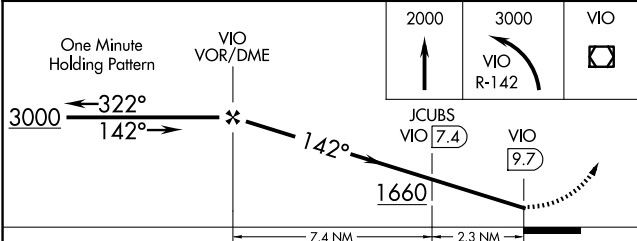
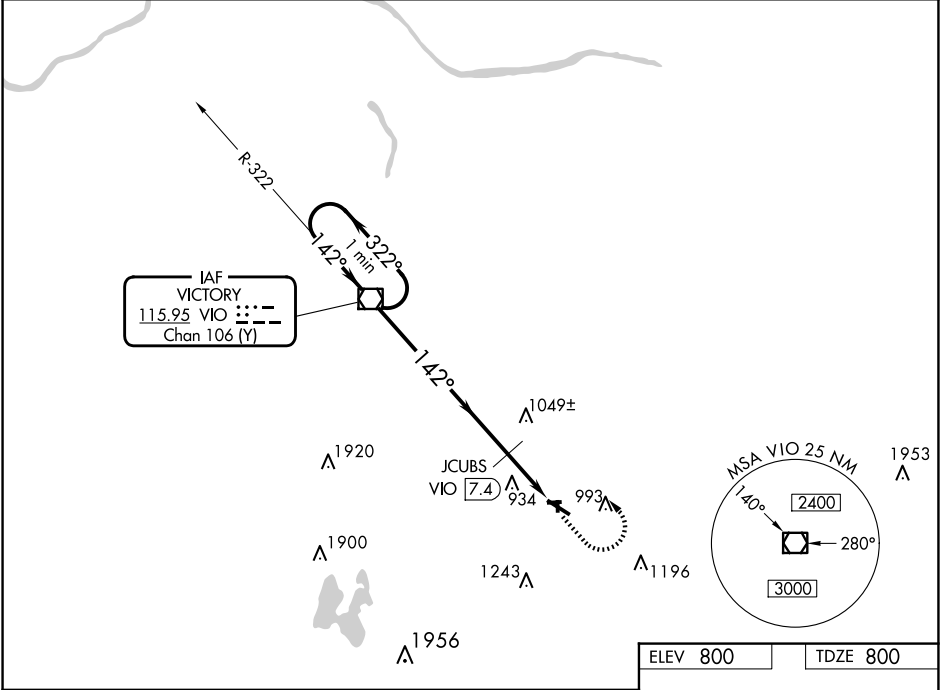


VOR/DME VIO	APP CRS	Rwy Idg	4763
115.95	142°	TDZE	800
Chan 106 (Y)		Apt Elev	800

VOR RWY 12
HASTINGS (9D9)

<p>▼ Helicopter visibility reduction below ¾ SM NA. Use GRR altimeter setting; when not received, use Y70 altimeter setting and increase all MDA 20 feet.</p> <p>▲ NA Increase JCUBS DME minimums S-12 visibility ⅛ mile Cat C. Increase JCUBS fix minimum altitude 1700. Circling NA to Rwy 9, 18, 27, 36.</p>	<p>MISSED APPROACH: Climb to 2000, then climbing left turn to 3000 on VIO VOR/DME R-142 to VIO VOR/DME and hold.</p>
---	--

GRR ASOS 118.725	GREAT LAKES APP CON ★ 128.4 257.6	UNICOM 123.075 (CTAF) 0
---------------------	--------------------------------------	----------------------------



CATEGORY	A	B	C	D
S-12	1700-1¼	900 (900-1¼)	1700-2½ 900 (900-2½)	NA
◼ CIRCLING	1700-1¼	900 (900-1¼)	1700-2¾ 900 (900-2¾)	NA
JCUBS DME MINIMUMS				
S-12	1340-1	540 (600-1)	1340-1½ 540 (600-1½)	NA
◼ CIRCLING	1380-1 580 (600-1)	1440-1 640 (700-1)	1440-1¾ 640 (700-1¾)	NA

