

WAAS CH 86326 W30A	APP CRS 309°	Rwy Idg 4752 TDZE 800 Apt Elev 800
--	------------------------	---

RNAV (GPS) RWY 30
HASTINGS (9D9)

RNP APCH - GPS.

NA Circling NA to Rwy 9, 18, 27 and 36. Baro-VNAV NA. Use GRR altimeter setting; when not received, use Y70 altimeter setting: increase LPV DA to 1131 feet; increase LNAV/VNAV DA to 1377; increase all MDAs 20 feet. Rwy 30 helicopter visibility reduction below $\frac{3}{4}$ SM NA.

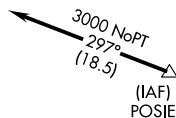
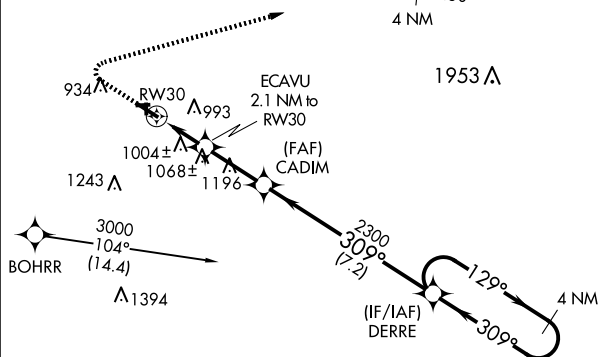
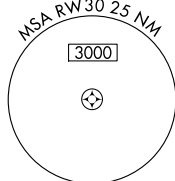
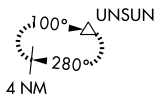
MISSED APPROACH:
Climb to 1400 then climbing
right turn to 3000 direct
UNSUB and hold.

GRR ASOS
118.725

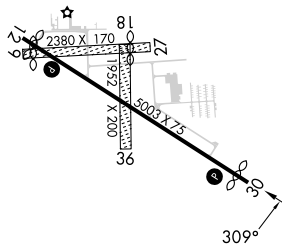
GREAT LAKES APP CON★
128.4 257.6

UNICOM
123.075 (CTAF) **L**

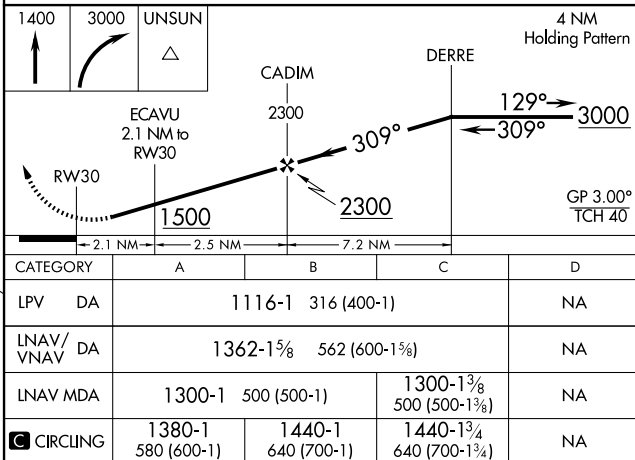
RADAR REQUIRED



ELEV 800		TDZE 800
----------	--	----------



MIRL Rwy 12-30 **L**
REIL Rwy 12 and 30 **L**



RNAV (GPS) RWY 30