

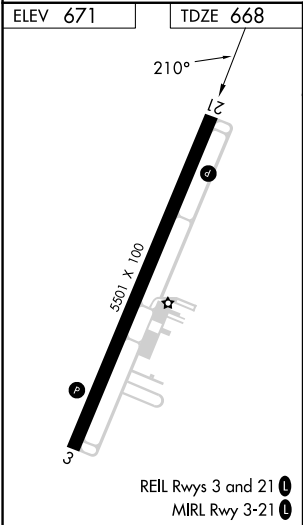
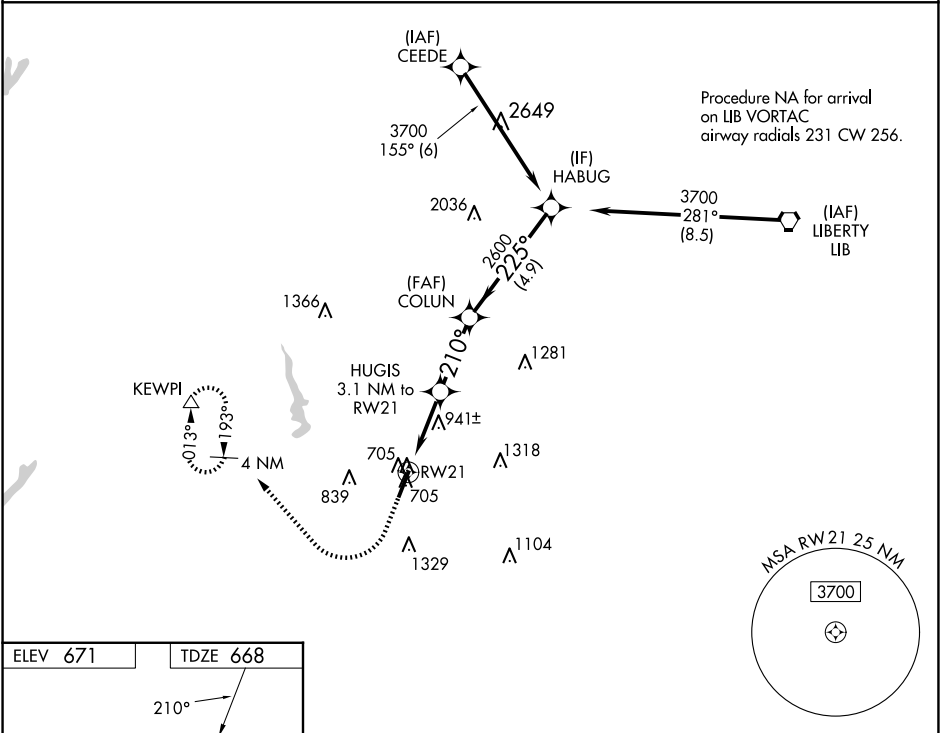
WAAS CH 53739 W21A	APP CRS 210°	Rwy Idg TDZE 668 Apt Elev 671
--	------------------------	---

RNAV (GPS) RWY 21

ASHEBORO RGNL (HBI)

RNP APCH-GPS. ▼ For uncompensated Baro-VNAV systems, LNAV/VNAV NA below -16°C (4°F) ▲ or above 54°C (130°F). Rwy 21 helicopter visibility reduction below ¾ SM NA.	MISSED APPROACH: Climb to 3000 then right turn direct KEWPI and hold.
--	--

AWOS-3 119.275	GREENSBORO APP CON 126.6 327.075	UNICOM 122.8 (CTAF) 0
--------------------------	--	---------------------------------



3000 ↑		KEWPI △		HABUG 3700			
*LNAV only.		HUGIS 3.1 NM to RW21		COLUN 2600		225°	
RW21		*1.6 NM to RW21		*1680		2600	
1.6 NM		1.5 NM		2.8 NM		4.9 NM	
CATEGORY		A		B		C	
LPV DA				918-¾		250 (300-¾)	
LNAV/ VNAV DA				1069-1⅛		401 (400-1⅛)	
LNAV MDA		1220-1 552 (600-1)		1220-1⅝ 552 (600-1⅝)			
CIRCLING		1300-1 629 (700-1)		1360-1 689 (700-1)		1680-3 1009 (1100-3)	