

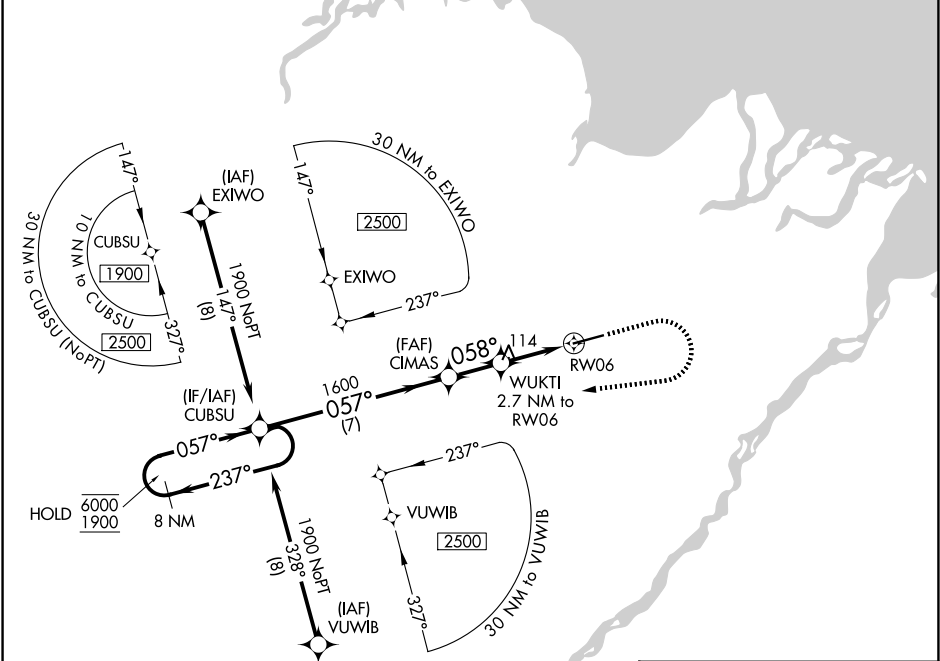
WAAS CH <b>49103</b> <b>W06A</b>	APP CRS <b>058°</b>	Rwy Ldg TDZE Apt Elev <b>6500</b> <b>67</b> <b>67</b>
--	------------------------	--

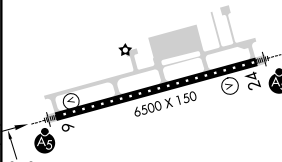
RNAV (GPS) Z RWY 6

DEADHORSE (SCC) (PASC)

RNP APCH. ▼ ▲ For uncompensated Baro-VNAV systems, LNAV/VNAV NA below -17°C or above 54°C. For inop ALS, increase LPV Cat E visibility to RVR 4000, and increase LNAV/VNAV all Cats and LNAV Cats C/D/E visibility to RVR 4500. # RVR 1800 authorized with use of FD or AP or HUD to DA.	MALSR AS	MISSED APPROACH: Climb to 500 then climbing right turn to 1900 direct CUBSU and hold.
--	-------------	---

AFIS★ <b>118.4</b>	ANCHORAGE CENTER <b>134.4 370.9</b>	DEADHORSE RADIO <b>123.6 (CTAF) 0</b>
-----------------------	--	--



ELEV 67						D	TDZE 67	
<p>8 NM Holding Pattern</p> <p>6000 ← 237°</p> <p>1900 → 057°</p> <p>GP 3.00°</p> <p>TCH 58</p>						<p>VGSI and RNAV glidepath not coincident (VGSI Angle 3.00/TCH 50).</p> <p>CUBSU</p> <p>CIMAS</p> <p>WUKTI 2.7 NM to RW06</p> <p>* LNAV only.</p> <p>* 0.8 NM to RW06</p> <p>1600</p> <p>057°</p> <p>058°</p> <p>* 980</p> <p>7 NM</p> <p>1.9 NM</p> <p>1.9 NM</p> <p>0.8</p>		
CATEGORY	A	B	C	D	E			
LPV DA#	267/24 200 (200-½)							
LNAV/ VNAV DA	369/24 302 (400-½)							
LNAV MDA	380/24 313 (400-½)							
CIRCLING	540-1	473 (500-1)	580-1½ 513 (600-1½)	620-2	553 (600-2)	HIRL Rwy 6-24 1		