

LOC/DME I-SCC

109.3

Chan 30

APP CRS

238°

Rwy Ldg TDZE Apt Elev

6500 66 67

LOC BC RWY 24

DEADHORSE (SCC) (PASC)

DME required.

For inop ALS, increase *S-LOC 24 Cat E visibility to RVR 5000 and S-LOC 24 Cat C/D/E visibility to RVR 5500.

MALSR

MISSED APPROACH: Climb to 1500 then climbing left turn to 4000 on heading 100° and SCC VOR/DME R-144 to UVALL/SCC VOR/DME 16 DME and hold.

*Missed approach requires minimum climb of 243 feet per NM to 780.

AFIS*

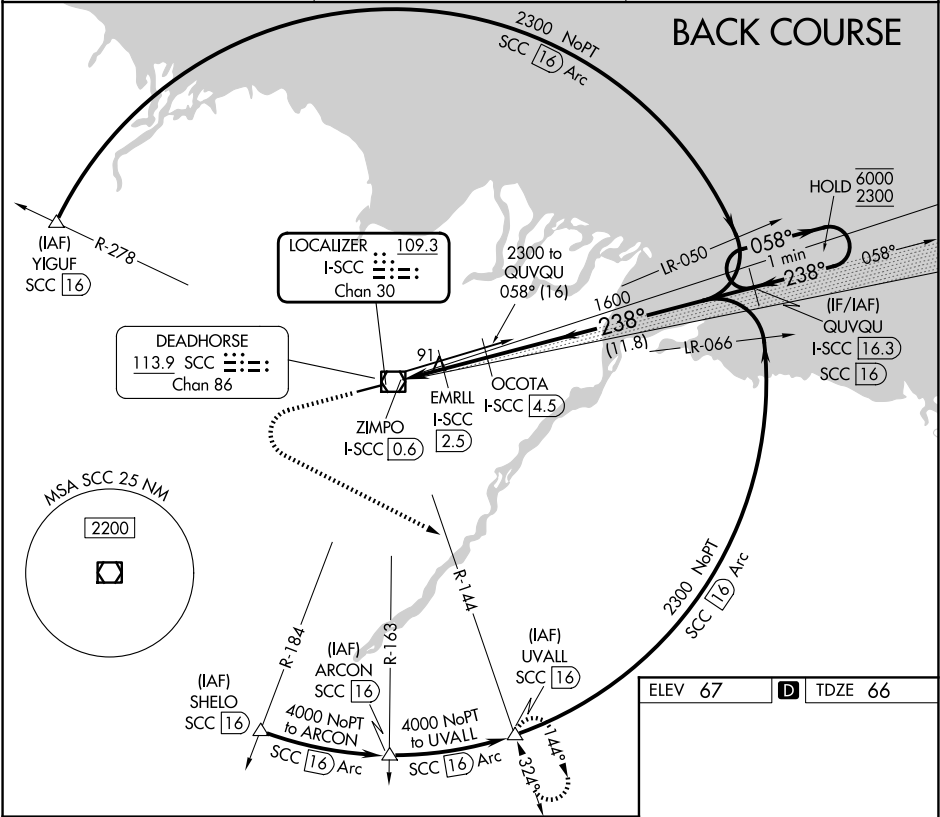
118.4

ANCHORAGE CENTER

134.4 370.9

DEADHORSE RADIO

123.6 (CTAF) 0



1500 4000

hdg 100°

SCC R-144

UVALL

Use I-SCC DME when on the localizer course.

QUVQU I-SCC 16.3

One Minute Holding Pattern

OCOTA I-SCC 4.5

EMRLL I-SCC 2.5

ZIMPO I-SCC 0.6

3.00° TCH 54

980 1600

238° 058°

6000 2300

Disregard GS indications.

0.8 1.9 NM 2 NM 11.8 NM

CATEGORY	A	B	C	D	E
S-LOC 24*	360/24 294 (300-½)				
S-LOC 24	420/24	354 (400-½)	420/30	354 (400-¾)	
CIRCLING	540-1	473 (500-1)	580-1½ 513 (600-1½)	620-2	553 (600-2)

HIRL Rwy 6-24 0