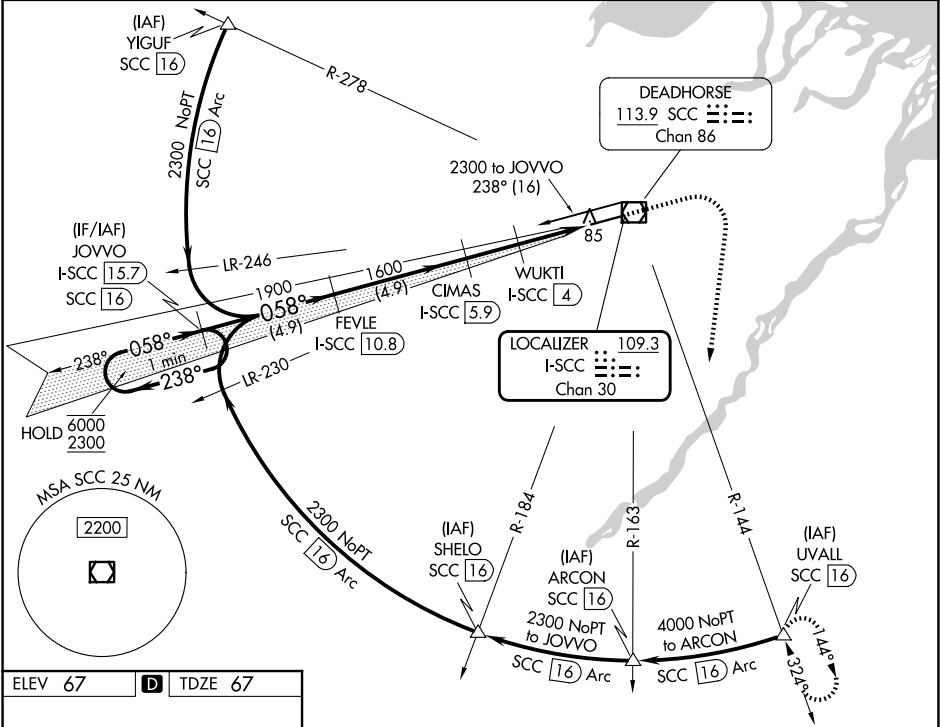


LOC/DME I-SCC	APP CRS	Rwy Ldg
109.3	058°	6500
Chan 30		TDZE 67
		Apt Elev 67

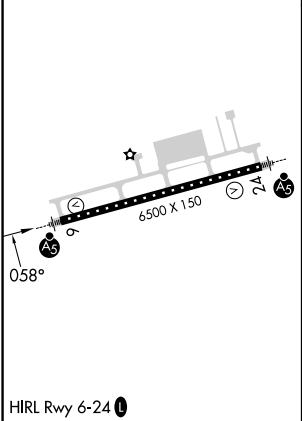
ILS or LOC RWY 6  
DEADHORSE (SCC) (PASC)

DME required.	MALSR	MISSED APPROACH: Climb to 1500 then climbing right turn to 4000 on heading 170° and SCC VOR/DME R-144 to UVALL/SCC 16 DME and hold.
For inop ALS, increase S-ILS 6 Cat E visibility to RVR 4000 and S-LOC 6 Cats C/D/E to RVR 4500. *RVR 1800 authorized with use of FD or AP or HUD to DA.		

AFIS * 118.4	ANCHORAGE CENTER 134.4 370.9	DEADHORSE RADIO 123.6 (CTAF) 0
-----------------	---------------------------------	-----------------------------------



ELEV 67	TDZE 67
---------	---------



VGSi and ILS glidepath not coincident (VGSi Angle 3.00/TCH 50).		1500	4000	SCC	UVALL
JOVVO I-SCC 15.7		↑	hdg 170°	SCC R-144	△
One Minute Holding Pattern					
6000 ← 238° → 058°					
2300 058°					
GS 3.00° TCH 58					
4.9 NM		4.9 NM	1.9 NM	0.8	
CATEGORY	A	B	C	D	E
S-ILS 6 *	267/24 200 (200-1/2)				
S-LOC 6	360/24 293 (300-1/2)				
CIRCLING	540-1 473 (500-1)		580-1 1/2 513 (600-1 1/2)		620-2 553 (600-2)