

WAAS CH <b>86229</b> <b>W18A</b>	APP CRS <b>179°</b>	Rwy Idg TDZE Apt Elev	<b>5849</b> <b>71</b> <b>75</b>
--	------------------------	-----------------------------	---------------------------------------

RNAV (GPS) RWY 18

ST LANDRY PARISH (OPL)

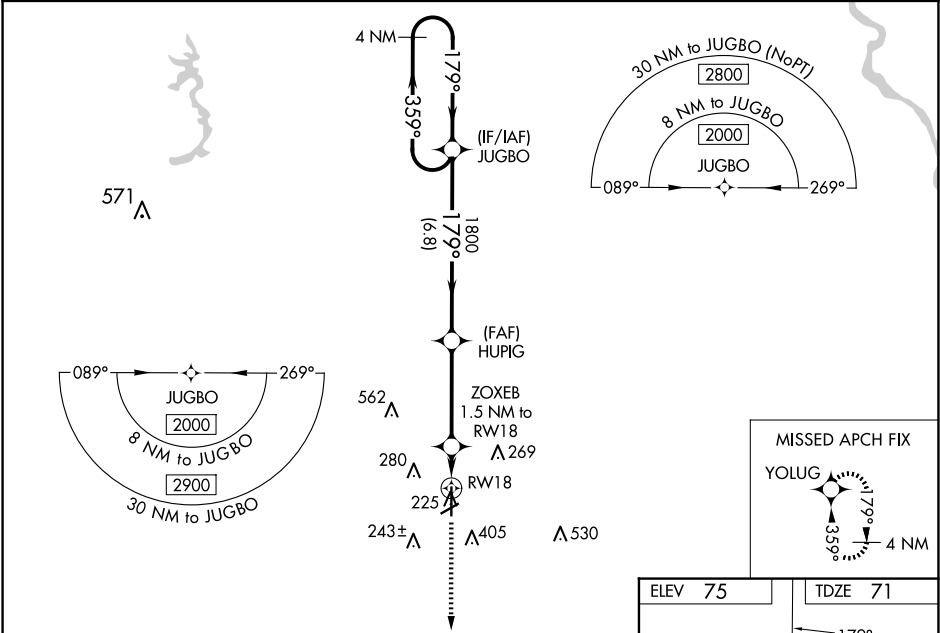
▼

NA

Baro-VNAV NA when using Lafayette altimeter setting. For uncompensated Baro-VNAV systems, LNAV/VNAV NA below -15°C (5°F) or above 43°C (109°F). When VGSI inop, Straight-in/Circling Rwy 18 procedure NA at night. DME/DME RNP-0.3 NA. Helicopter visibility reduction below 1 SM NA. Circling to Rwy 6/24 NA at night. When local altimeter setting not received, use Lafayette altimeter setting: Increase LPV DA to 377 feet, LNAV/VNAV DA to 442 feet, and visibility LNAV/VNAV all Cats ¼ SM; increase all MDA 60 feet and visibility LNAV Cat C and D and Circling Cat C and D ¼ SM.

MISSED APPROACH: Climb to 2300 direct YOLUG and hold.

AWOS-3PT <b>118.775</b>	LAFAYETTE APP CON ★ <b>128.7 268.7</b>	UNICOM <b>123.0 (CTAF) 0</b>
----------------------------	---	---------------------------------



4 NM Holding Pattern		VGSI and RNAV glidepath not coincident (VGSI Angle 3.50/TCH 58).		2300	YOLUG
JUGBO		HUIG		ZOXEB	*LNAV only.
2000		1800		1.5 NM to RW18	
GP 3.00° TCH 52		*600		RW18	
		6.8 NM		3.8 NM	1.5 NM
CATEGORY	A	B	C	D	
LPV DA	321-1		250 (300-1)		
LNAV/VNAV DA	386-1		315 (400-1)		
LNAV MDA	480-1	409 (500-1)	480-1 1/8	409 (500-1 1/8)	
CIRCLING	780-1	705 (800-1)	780-2	920-2 3/4	845 (900-2 3/4)

