

VOR ECS <u>108.2</u>	APP CRS 323°	Rwy Idg 5310 TDZE 4176 Apt Elev 4176
--------------------------------	------------------------	---

VOR RWY 32
MONDELL FLD (ECS)

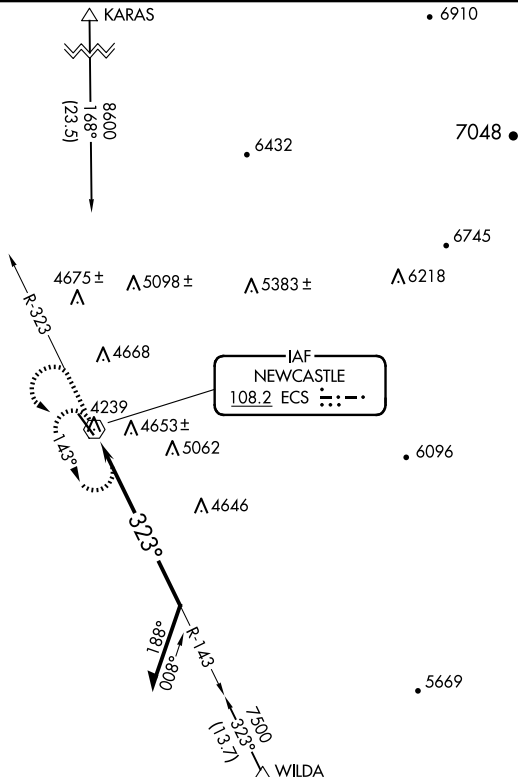
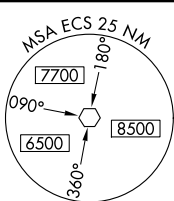


When Newcastle altimeter setting not received,
procedure NA. Circling NA northeast of Rwy 14-32.

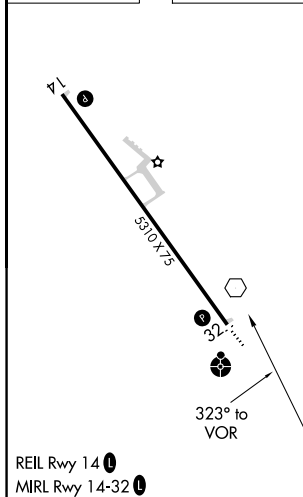


MISSED APPROACH: Climb to 6700 on ECS VOR R-323 then climbing left turn to 7500 direct ECS VOR and hold, continue climb-in-hold to 7500.

AWOS-3PT 118.0	DENVER CENTER 127.95 338.2	UNICOM 122.8 (CTAF) 0
--------------------------	--------------------------------------	---------------------------------



ELEV 4176		TDZE 4176
-----------	--	-----------



CATEGORY	A	B	C	D
S-32	4980- $\frac{3}{4}$ 804 (900- $\frac{3}{4}$)	4980-1 804 (900-1)	4980-2 $\frac{1}{2}$	804 (900-2 $\frac{1}{2}$)
C CIRCLING	4980-1 804 (900-1)	4980-1 $\frac{1}{4}$ 804 (900-1 $\frac{1}{4}$)	4980-2 $\frac{1}{2}$ 804 (900-2 $\frac{1}{2}$)	5000-2 $\frac{3}{4}$ 824 (900-2 $\frac{3}{4}$)