

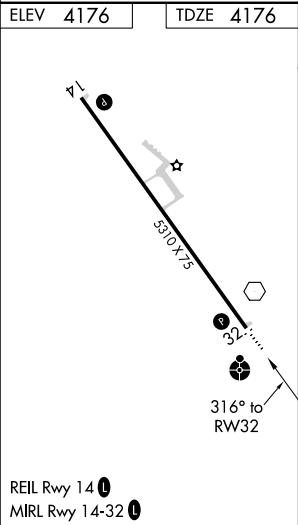
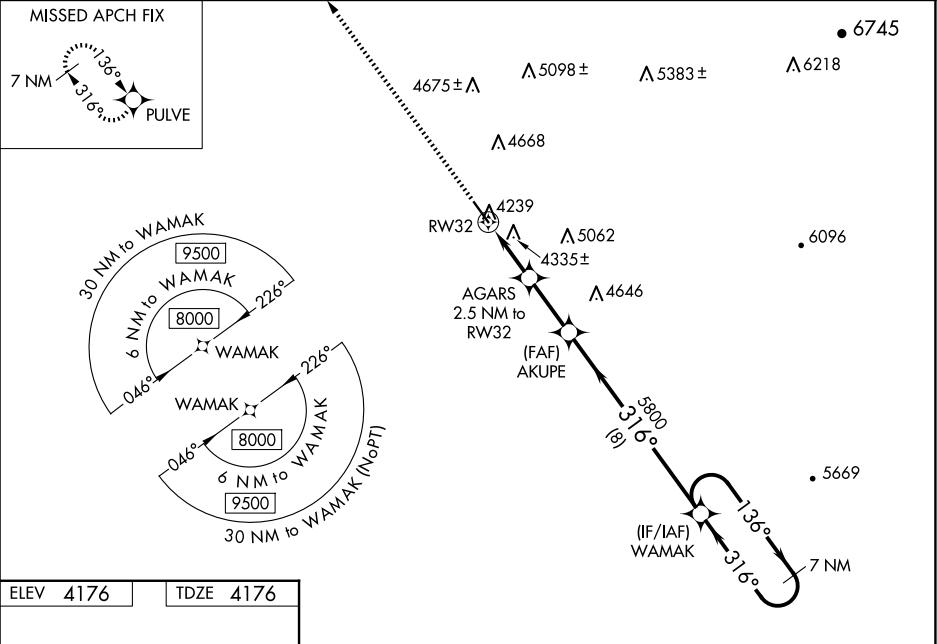
WAAS CH <b>61225</b> <b>W32A</b>	APP CRS <b>316°</b>	Rwy Idg TDZE <b>4176</b> Apt Elev <b>4176</b>
--	------------------------	---

RNAV (GPS) RWY 32

MONDELL FLD (E/C/S)

RNP APCH.	ODALS	MISSED APPROACH: Climb to 9500 direct PULVE and hold, continue climb-in-hold to 9500.
▼ When Newcastle altimeter setting not received, procedure NA. For uncompensated Baro-VNAV systems, LNAV/VNAV NA below -23°C (-9°F) or above 53°C (128°F). Circling NA northeast of Rwy 14-32. For inop ODAL, increase LNAV/VNAV visibility all Cats and LNAV Cats C/D ½ mile. Inop table does not apply to LPV all Cats and LNAV Cats A/B.		

AWOS-3PT <b>118.0</b>	DENVER CENTER <b>127.95 338.2</b>	UNICOM <b>122.8 (CTAF)</b>
--------------------------	--------------------------------------	-------------------------------



9500	PULVE	AGARS 2.5 NM to RW32	AKUPE 5800	WAMAK 7 NM Holding Pattern
*LNAV only.	*1.2 NM to RW32	*1.2 NM to RW32	5800	8000
1.2 NM	1.3 NM	2.5 NM	8 NM	GP 3.00° TCH 43
CATEGORY	A	B	C	D
LPV DA	4385-1	209 (300-1)		
LNAV/VNAV DA	4618-1½	442 (500-1½)		
LNAV MDA	4600-1	424 (500-1)	4600-1½	424 (500-1½)
CIRCLING	4700-1	524 (600-1)	4720-1½ 544 (600-1½)	5000-2¾ 824 (900-2¾)