

WAAS
CH **42813**
W36A

APP CRS
357°

Rwy Idg
TDZE **192**
Apt Elev **213**

RNAV (GPS) RWY 36
JASPER COUNTY/BELL FLD (JAS)

RNP APCH-GPS.

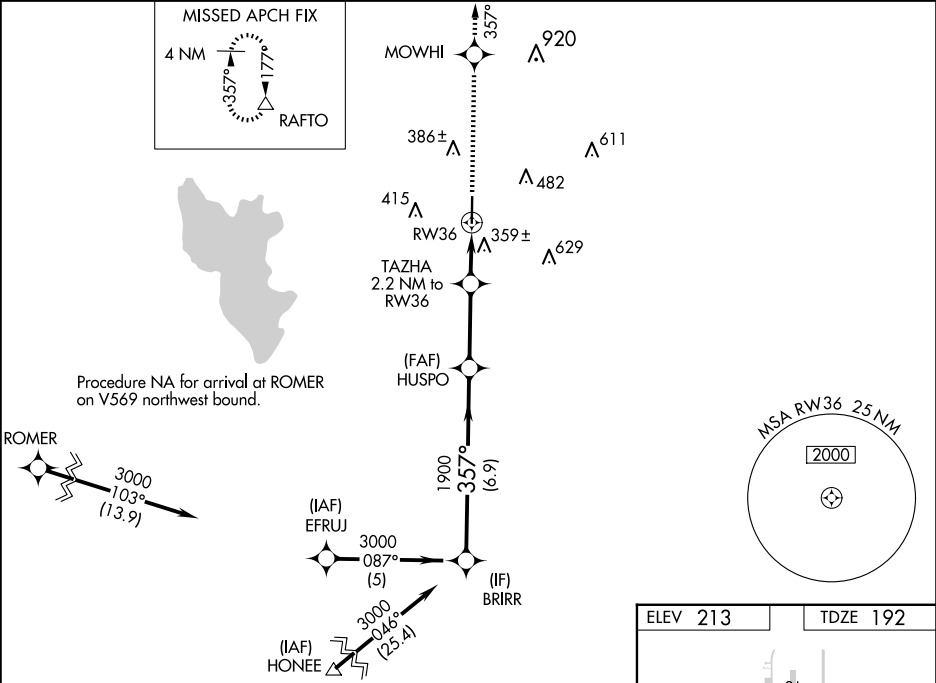
▼

⚠

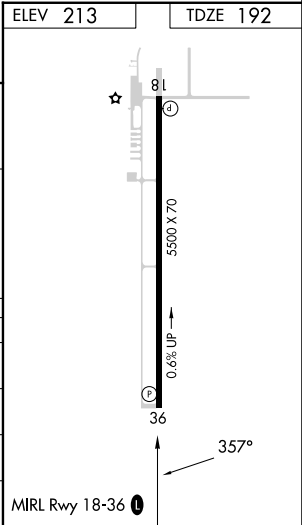
Baro-VNAV NA when using De Ridder altimeter setting. For uncompensated Baro-VNAV systems, LNAV/VNAV NA below -15°C or above 54°C. Rwy 36 helicopter visibility reduction below ¼ SM NA. VDP NA when using De Ridder altimeter setting. When local altimeter setting not received, use De Ridder altimeter setting and increase LPV DA to 681 feet and all visibilities ¼ SM, increase LNAV/VNAV DA to 762 feet and all visibilities ¼ SM, increase all MDAs 100 feet and LNAV visibility Cat C ½ SM, and Circling visibility Cat C ¼ SM.

MISSED APPROACH:
Climb to 4000 direct MOWHI and via track 357° to RAFTO and hold.

AWOS-3 118.375	HOUSTON CENTER 126.95 363.05	UNICOM 122.8 (CTAF) 0
--------------------------	--	---------------------------------



Procedure Turn NA	BRIRR	VGSI and RNAV glidepath not coincident (VGSI Angle 3.50/TCH 45).	4000	MOWHI	tr 357°	RAFTO
	3000	HUSPO				△
	GP 3.00°					
	TCH 41					
	6.9 NM	3 NM	1 NM	1.2 NM		
CATEGORY	A	B	C	D		
LPV DA	594-1⅓	402 (400-1⅓)		NA		
LNAV/VNAV DA	675-1⅓	483 (500-1⅓)		NA		
LNAV MDA	680-1	488 (500-1)	680-1⅓ 488 (500-1⅓)	NA		
CIRCLING	740-1	527 (600-1)	800-1½ 587 (600-1½)	NA		



SC-5, 07 AUG 2025 to 04 SEP 2025

SC-5, 07 AUG 2025 to 04 SEP 2025