

WAAS CH 87013 W18A	APP CRS 177°	Rwy Idg 5500 TDZE 213 Apt Elev 213
--	------------------------	---

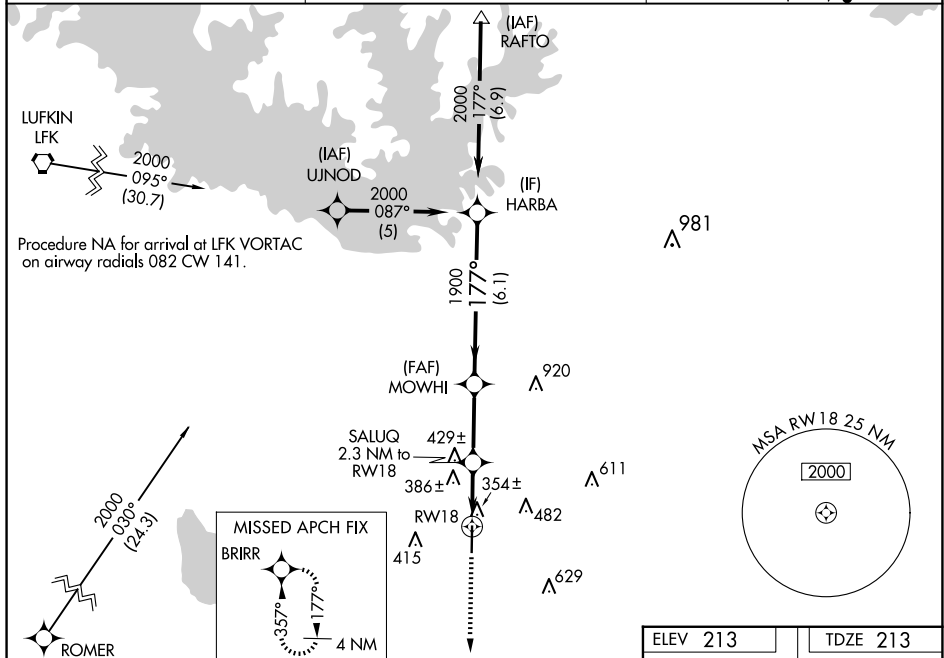
RNAV (GPS) RWY 18
JASPER COUNTY/BELL FLD (JAS)

RNP APCH-GPS.

T Baro-VNAV NA when using De Ridder altimeter setting. For uncompensated Baro-VNAV systems, LNAV/VNAV NA below -15°C or above 54°C. Rwy 18 helicopter visibility reduction below ¾ SM NA. VDP NA when using De Ridder altimeter setting. When local altimeter setting not received, use De Ridder altimeter setting and increase LPV DA to 654 feet and all visibilities ¾ SM. Increase LNAV/VNAV DA to 817 feet and all visibilities ¾ SM. Increase all MDA's 100 feet and LNAV visibility Cat C ¾ SM, and Circling visibility Cat C ½ SM.

MISSED APPROACH: Climb to 3000 direct BRIR and hold.

AWOS-3 118.375	HOUSTON CENTER 126.95 363.05	UNICOM 122.8 (CTAF)
--------------------------	--	-------------------------------



VGSB and RNAV glidepath not coincident
(VGSB Angle 3.50/TCH 41).

3000
↑
BRIR

* LNAV only

RW18

* 1.2 NM to RW18

SALUG
2.3 NM to RW18

MOWHI

HARBA

2000

177°

980*

1900

GP 3.00°
TCH 41

1.2 NM 1.1 NM 2.8 NM 6.1 NM

CATEGORY	A	B	C	D
LPV DA	567-1	354 (400-1)		NA
LNAV/VNAV DA	730-1 $\frac{3}{8}$	517 (600-1 $\frac{3}{8}$)		NA
LNAV MDA	700-1	487 (500-1)	700-1 $\frac{3}{8}$ 487 (500-1 $\frac{3}{8}$)	NA
CIRCLING	740-1	527 (600-1)	800-1 $\frac{1}{2}$ 587 (600-1 $\frac{1}{2}$)	NA

