

WAAS CH <b>58212</b> <b>W01A</b>	APP CRS <b>009°</b>	Rwy Idg <b>5002</b> TDZE <b>473</b> Apt Elev <b>473</b>
--	------------------------	---

# RNAV (GPS) RWY 1

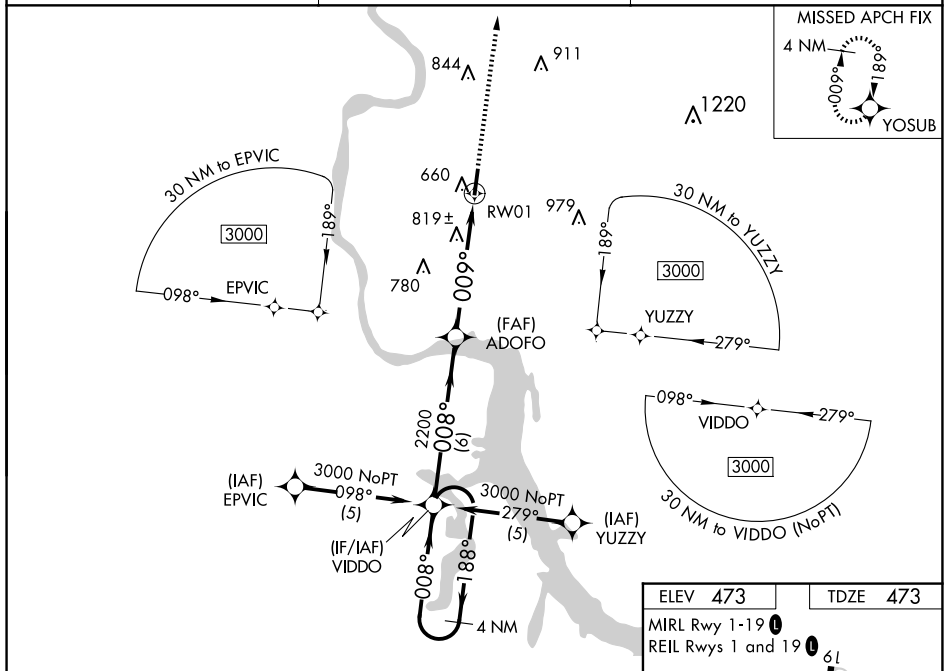
## SAVANNAH-HARDIN COUNTY (SNH)

RNP APCH - GPS	
----------------	--

**V** RNAV/VNAV NA below -15°C or above 54°C. Rwy 1 helicopter visibility reduction below ¼ SM NA. When local altimeter setting not received, use Muscle Shoals, AL altimeter setting and increase all DA 102 feet and all MDA 120 feet and increase LPV and LNAV/VNAV all Cats visibility ½ mile, LNAV Cat C visibility ¼ mile, Circling Cat B visibility ¼ mile and Circling Cat C visibility ½ mile. VDP NA when use Muscle Shoals altimeter setting.

**MISSED APPROACH.**  
Climb to 3000 direct  
YOSUB and hold.

AWOS-3 <b>133.925</b>	MEMPHIS CENTER <b>124.35 318.1</b>	CTAF <b>122.8 0</b>
--------------------------	---------------------------------------	------------------------



**VGSJ and RNAV glidepath not coincident (VGSJ Angle 3.00/TCH 28).**

**4 NM Holding Pattern**

**VIDDO**

**ADOFO**

**\*1.3 NM to RW01**

**RW01**

**GP 3.00° TCH 51**

**Distances:** 6 NM, 3.9 NM, 1.3

CATEGORY	A	B	C	D
LPV DA	845-1 $\frac{1}{4}$	372 (400-1 $\frac{1}{4}$ )		NA
LNAV/VNAV DA	1188-2 $\frac{1}{2}$	715 (800-2 $\frac{1}{2}$ )		NA
LNAV MDA	1080-1	607 (700-1)	1080-1 $\frac{3}{4}$ 607 (700-1 $\frac{3}{4}$ )	NA
CIRCLING	1100-1	627 (700-1)	1140-1 $\frac{3}{4}$ 667 (700-1 $\frac{3}{4}$ )	NA

