

WAAS

CH **70320**

W23A

APP CRS

227°

Rwy Idg

5501

TDZE

133

Apt Elev

133

RNAV (GPS) RWY 23

WAYNE EXEC JETPORT (GWW)

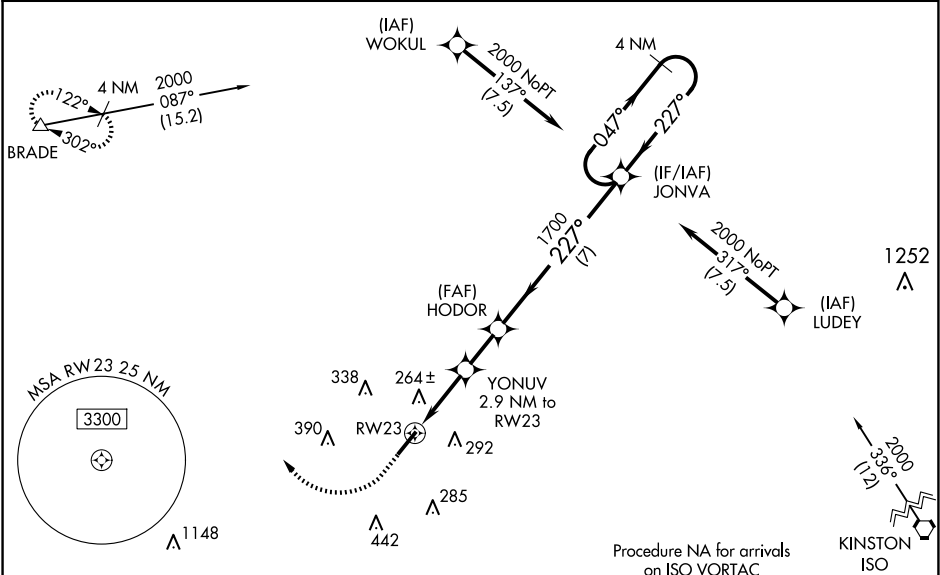
RNP APCH

▼ Baro-VNAV NA when using Smithfield altimeter setting. For uncompensated Baro-VNAV systems, LNAV/VNAV NA below -15°C (5°F) or above 43°C (109°F). VDP NA with Smithfield altimeter setting. When local altimeter setting not received, use Smithfield altimeter setting and increase LPV DA to 387 feet, LNAV/VNAV DA to 499 feet and all MDA 60 feet, increase LNAV/VNAV all Cats and LNAV Cats C/D visibilities ½ SM, and Circling Cat C/D ¼ SM. For inop ALS when using Smithfield altimeter setting, increase LNAV/VNAV visibility all Cats to 1 SM and LNAV visibility Cats A/B to 1 SM and Cats C/D to 1½ SM.

ODALS

MISSED APPROACH:
Climb to 600 then climbing right turn to 2000 direct BRADE and hold.

AWOS-3P 118.975	SEYMOUR JOHNSON APP CON ★ 121.175 290.9	UNICOM 122.975 (CTAF) 0
---------------------------	---	-----------------------------------



ELEV **133**

TDZE **133**

600

2000

BRADE

VGSI and RNAV glidepath not coincident (VGSI Angle 3.00/TCH 44).

*LNAV only.

YONUV 2.9 NM to RWY 23

*1.1 NM to RWY 23

HODOR

JONVA

4 NM Holding Pattern

047°

227°

1700

1100*

GP 3.00° TCH 51

193

5501 X 100

MIRL Rwy 5-23 0

REIL Rwy 5 and 23 0

CATEGORY	A	B	C	D
LPV DA		333-¾	200 (200-¾)	
LNAV/VNAV DA		445-⅞	312 (400-⅞)	
LNAV MDA	520-¾	387 (400-¾)	520-1	387 (400-1)
CIRCLING	580-1 447 (500-1)	640-1 507 (600-1)	760-1¾ 627 (700-1¾)	760-2 627 (700-2)