

LOC I-UGZ	APP CRS	Rwy Idg	5501
111.9	227°	TDZE	134
		Apt Elev	134

ILS or LOC RWY 23

WAYNE EXEC JETPORT (GWW)

DME or RADAR required.

▼

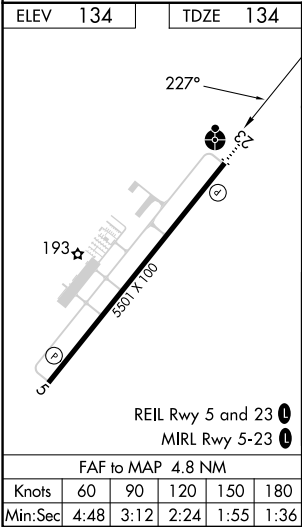
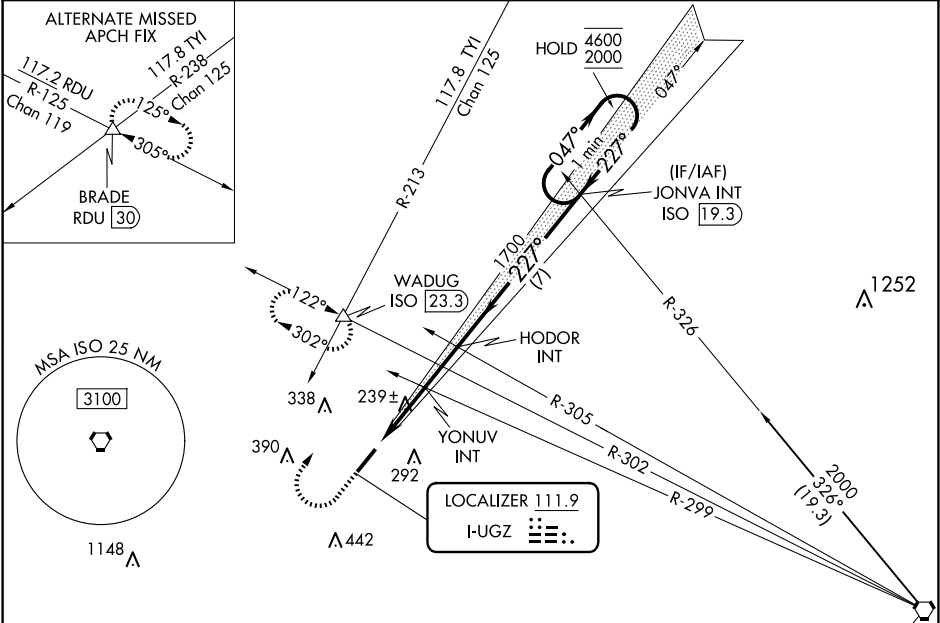
▲

When local altimeter setting not received, use Smithfield altimeter setting and increase DA to 388 and all MDAs 60 feet, increase S-LOC Cats C/D visibility ¼ SM, Circling Cats C/D ½ SM. Inop table does not apply to S-ILS 23.

ODALS

MISSED APPROACH: Climb to 900 then climbing right turn to 2000 on heading 040° and on ISO VORTAC R-302 to WADUG INT/ISO 23.3 DME and hold.

AWOS-3P	SEYMOUR JOHNSON APP CON ★	UNICOM
118.975	121.175 290.9	122.975 (CTAF) 0



900 2000 ISO WADUG VGSI and ILS glidepath not coincident (VGSI Angle 3.00/TCH 44). One Minute Holding Pattern				
JONVA INT 047° 4600 2000 GS 3.00° TCH 51				
HODOR INT 1700 YONUV INT 1100 1700				
2.9 NM 1.9 NM 7 NM				
CATEGORY	A	B	C	D
S-ILS 23	334-¾ 200 (200-¾)			
S-LOC 23	500-¾ 366 (400-¾)		500-1 366 (400-1)	
CIRCLING	580-1 446 (500-1)		760-1¾ 626 (700-1¾)	
	640-1 506 (600-1)		760-2 626 (700-2)	