

ALLENDALE, SOUTH CAROLINA

AL-5769 (FAA)

24025

VOR ALD	APP CRS	Rwy Idg	N/A
116.7	140°	TDZE	N/A
		Apt Elev	162

APP CR
140°

Rwy Idg	TDZE	Apt Elev
1	10	10
2	10	10
3	10	10
4	10	10
5	10	10
6	10	10
7	10	10
8	10	10
9	10	10
10	10	10
11	10	10
12	10	10
13	10	10
14	10	10
15	10	10
16	10	10
17	10	10
18	10	10
19	10	10
20	10	10
21	10	10
22	10	10
23	10	10
24	10	10
25	10	10
26	10	10
27	10	10
28	10	10
29	10	10
30	10	10
31	10	10
32	10	10
33	10	10
34	10	10
35	10	10
36	10	10
37	10	10
38	10	10
39	10	10
40	10	10
41	10	10
42	10	10
43	10	10
44	10	10
45	10	10
46	10	10
47	10	10
48	10	10
49	10	10
50	10	10
51	10	10
52	10	10
53	10	10
54	10	10
55	10	10
56	10	10
57	10	10
58	10	10
59	10	10
60	10	10
61	10	10
62	10	10
63	10	10
64	10	10
65	10	10
66	10	10
67	10	10
68	10	10
69	10	10
70	10	10
71	10	10
72	10	10
73	10	10
74	10	10
75	10	10
76	10	10
77	10	10
78	10	10
79	10	10
80	10	10
81	10	10
82	10	10
83	10	10
84	10	10
85	10	10
86	10	10
87	10	10
88	10	10
89	10	10
90	10	10
91	10	10
92	10	10
93	10	10
94	10	10
95	10	10
96	10	10
97	10	10
98	10	10
99	10	10
100	10	10

N/A
N/A
162

VOR-A
ALLENDALE COUNTY (AQX)



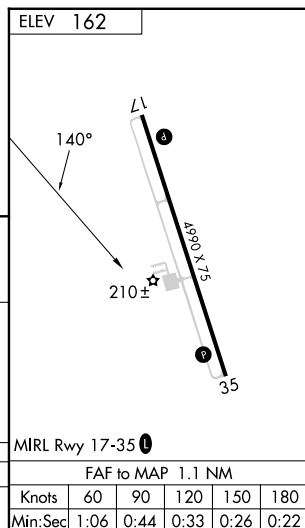
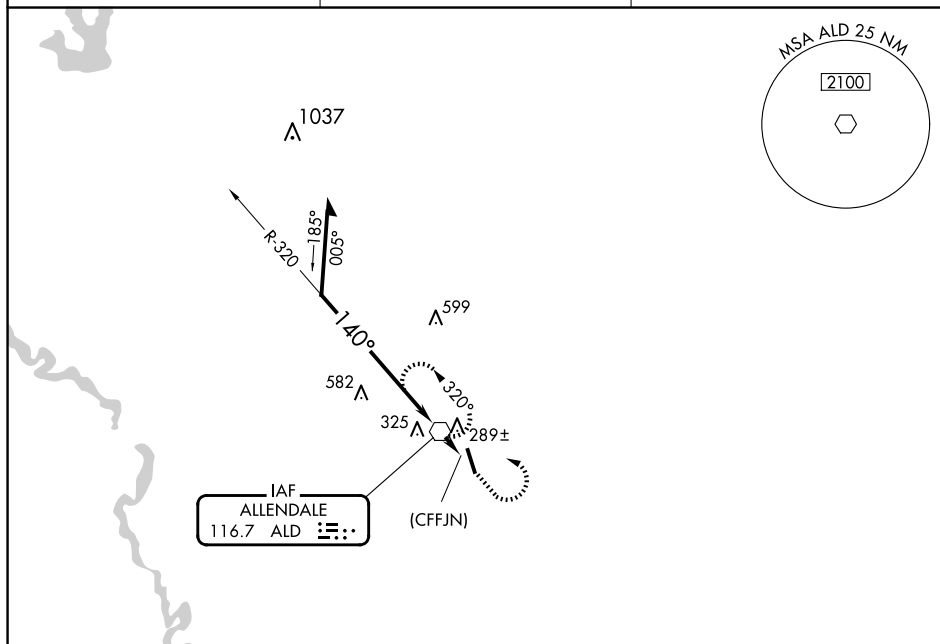
When local altimeter setting not received, use Augusta Rgnl at Bush Fld altimeter setting.

MISSED APPROACH: Climb to 1300, then climbing left turn to 2000 direct ALD VOR and hold.

AWOS-3PT
118.95

JACKSONVILLE CENTER
132.925 363.2

UN|COM
122.8 (CTAF) **L**



Remain within 10 NM

ALD VOR

320°

2100

140°

1300

(CFFJN)

11 NM

Legend:

- 1300 (up arrow)
- 2000 (curved arrow)
- ALD (hexagon)

CATEGORY	A	B	C	D	FAF to MAP 1.1 NM					
CIRCLING	860-1	698 (700-1)	NA		Knots	60	90	120	150	180
					Min:Sec	1:06	0:44	0:33	0:26	0:22

ALLENDALE, SOUTH CAROLINA
Amdt 6 24JUL14

33°00'N-81°16'W

ALLENDALE COUNTY (AQX)
VOR-A

SE-2, 07 AUG 2025 to 04 SEP 2025