

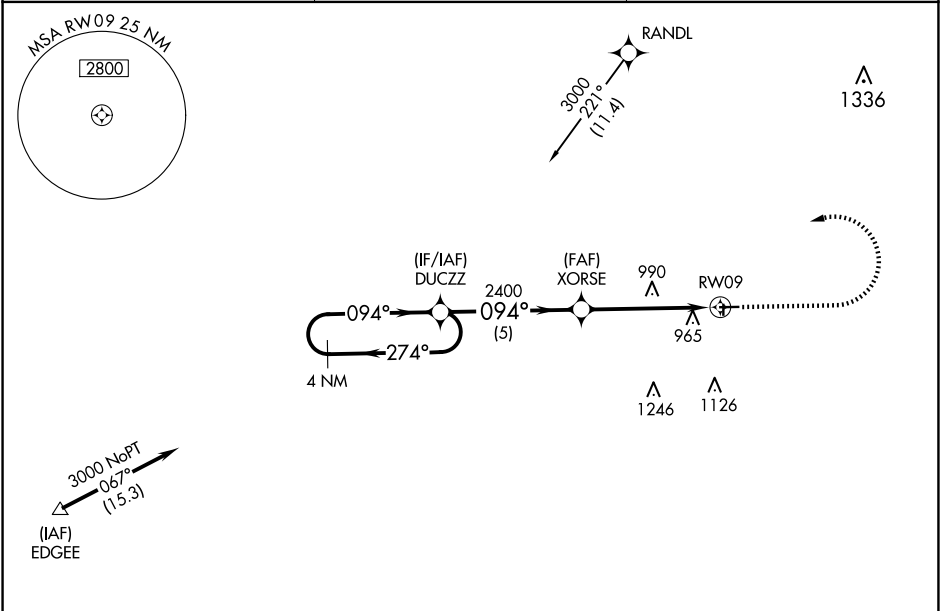
WAAS CH 93828 W09A	APP CRS 094°	Rwy Idg 3882 TDZE 779 Apt Elev 781
--	------------------------	---

RNAV (GPS) RWY 9

FULTON COUNTY (USE)

RNP APCH - GPS.	MISSED APPROACH: Climb to 2100 then climbing left turn to 3000 direct DUCZZ and hold.
▼ For uncompensated Baro-VNAV systems, LNAV/VNAV NA below -16°C or above 54°C. Circling NA to Rwys 18 and 36. Rwy 9 helicopter visibility reduction below 1 SM NA. Procedure NA at night.	

AWOS-3P 127.375	TOLEDO APP CON 134.35 317.55	UNICOM 123.0 (CTAF) 0
---------------------------	--	---------------------------------



					ELEV 781	TDZE 779
<div>4 NM Holding Pattern</div> <div>VGSI and RNAV glidepath not coincident (VGSI Angle 3.00/TCH 24).</div> <div>DUCZZ</div> <div>3000 ← 274° 094° →</div> <div>GP 3.00° TCH 40</div> <div>XORSE 2400</div> <div>2400</div> <div>RW09</div> <div>5 NM 5 NM</div> <div>2100 3000 DUCZZ</div> <div>↑ ↶ ✦</div>					<div>094° to RW09</div> <div>81 3882 X 75 27</div> <div>2113 X 75 36</div> <div>✧</div>	
CATEGORY	A	B	C	D		
LPV DA	1109-1 330 (400-1)					
LNAV/VNAV DA	1198-1½ 419 (500-1½)					
LNAV MDA	1300-1 521 (600-1)		1300-1½ 521 (600-1½)			
CIRCLING	1320-1 539 (600-1)		1480-2 699 (700-2)	1480-2¼ 699 (700-2¼)	REIL Rwys 9 and 27 0 MIRL Rwy 9-27 0	