

VOR/DME CUZ
108.2
Chan **19**

APP CRS
135°

Rwy Idg
TDZE
Apt Elev
4203
2546
2546

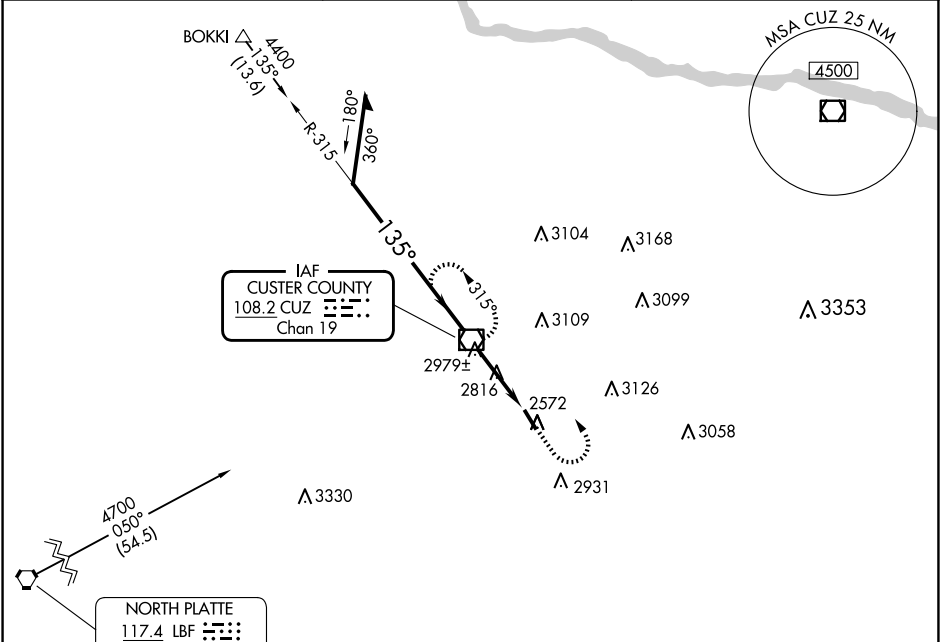
BROKEN BOW MUNI/KEITH GLAZE FLD (BBW)

VOR RWY 14

When local altimeter setting not received; use North Platte Rgnl/Lee Bird Fld altimeter setting. Rwy 14 helicopter visibility reduction below ¾ SM NA.

MISSED APPROACH: Climb to 4400 then left turn direct CUZ VOR/DME and hold.

ASOS 120.0	DENVER CENTER 132.7 226.675	UNICOM 122.8 (CTAF) 0
---------------	--------------------------------	--------------------------



ELEV 2546		TDZE 2546	
CUZ VOR/DME		CUZ	
Remain within 10 NM		4400	
315°		135°	
4400		3600	
3.2 NM		4203 X 75	
CATEGORY		A	
S-14		3240-1 694 (700-1)	
CIRCLING		3280-1 734 (800-1)	
NORTH PLATTE RGNL/LEE BIRD FLD ALTIMETER SETTING MINIMUMS		REIL Rwy 14 0	
S-14		3380-1 834 (900-1)	
CIRCLING		3440-1 894 (900-1 ¼)	
NA		MIRL Rwy 14-32 0	
NA		FAF to MAP 3.2 NM	
NA		Knots 60 90 120 150 180	
NA		Min:Sec 3:12 2:08 1:36 1:17 1:04	