

23222

VOR RWY 27  
MEDINA MUNI (1G5)

**MISSED APPROACH:** Climb to 2000 then climbing right turn to 3100 on ACO VOR/DME R-278 to NVRTL INT and hold, continue climb-in-hold to 3100.

CLE ASOS <b>127.85</b>	CLEVELAND APP CON <b>125.35 346.325</b>	UNICOM <b>123.0 (CTAF) 0</b>
---------------------------	--	---------------------------------

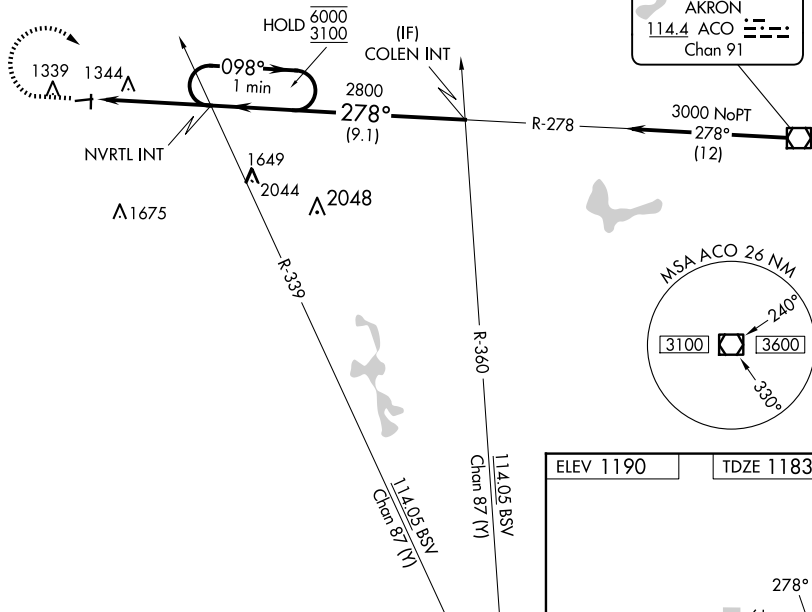
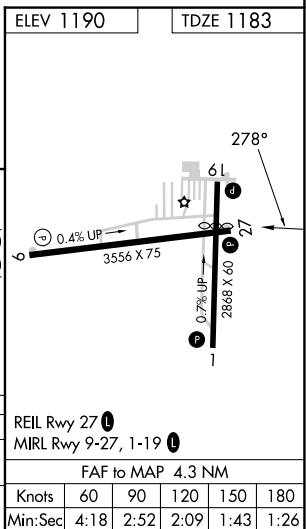


Figure 1 illustrates a 3D path profile. The vertical axis is labeled 2000, the horizontal axis is labeled 3100, and the depth axis is labeled NVRTL INT. The path starts at 2000, goes up to 3100, then curves down to 2800. The path is labeled "ACO R-278" and "NVRTL INT". The path is divided into segments with angles of 098°, 278°, and 278°. The path is also labeled "One Minute Holding Pattern" and "TCH 30".



MEDINA MUNI (1G5)  
VOR RWY 27

EC-2, 07 AUG 2025 to 04 SEP 2025