

APP CRS
091°

Rwy Idg **3556**
TDZE **1179**
Apt Elev **1190**

RNAV (GPS) RWY 9

MEDINA MUNI (1G5)

RNP APCH.

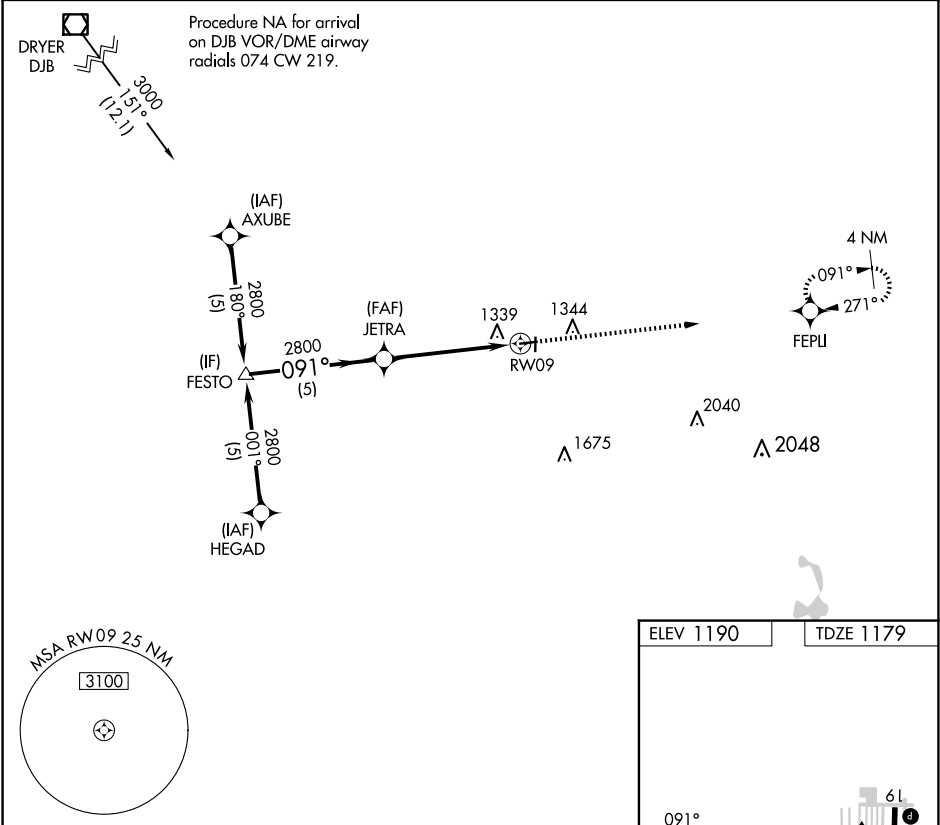
▼

NA

Procedure NA at night.
Rwy 9 helicopter visibility reduction below 1 SM NA.
Use Cleveland-Hopkins Intl altimeter setting.

MISSED APPROACH: Climb to 2800 direct FEPLI and hold.

CLE ASOS 127.85	CLEVELAND APP CON 125.35 346.325	UNICOM 123.0 (CTAF) 1
---------------------------	--	---------------------------------



Visual Segment - Obstacles.

FESTO

JETRA

RWY 09

FEPLI

2800

091°

2800

5 NM

4.9 NM

0.4% UP

3556 X 75

0.7% UP

2868 X 60

6L

27

1

CATEGORY	A	B	C	D
LNNAV MDA	1700-1	521 (600-1)	1700-1½ 521 (600-1½)	NA

REIL Rwy 27 1

MIRL Rwy 9-27 and 1-19 1

EC-2, 07 AUG 2025 to 04 SEP 2025

EC-2, 07 AUG 2025 to 04 SEP 2025